

SURFACE AREA IS RELATED TO LENGTH IN FOREST RED MILLIPEDES *CENTROBOLUS* COOK, 1897

M. I. COOPER

University of Stellenbosch, South Africa.

Abstract- Surface area was tested for a correlation with length in forest red millipedes *Centrobolus*. Length in females were related to surface area ($r=0.921$, $r^2=0.8482$, $n=22$, $p<0.00001$) and length in males was related to surface area ($r=0.9494$, $r^2=0.9014$, $n=22$, $p<0.00001$).

Keywords: length, surface area, Red Millipedes.

I. INTRODUCTION

Red millipedes are found in the southern African subregion with northern limits on the east coast being about -17° latitude S and southern limits being -35° latitude S. They are well represented in the littoral forests of the eastern half of the subcontinent [1-376]. It consists of taxonomically important species with 12 species considered threatened and includes nine vulnerable and three endangered species [226]. It occurs in all the forests of the coastal belt from the Cape Peninsula to Beira in Mocambique [225]. These worm-like millipedes have female-biased sexual size dimorphism [57].

Here, surface area is correlated with length in *Centrobolus* Cook, 1897.

II. MATERIALS AND METHODS

Horizontal tergite width measurements for 22 species of southern African *Centrobolus* were obtained from published material [57]. These were halved to get radii (r). The surface areas (mm^2) were calculated based on the equation $2 \cdot \pi \cdot r \cdot (r + h)$ for males and females (Appendix 1 & 2 respectively). A correlation between lowest number of daily hours of sunshine in a day and length was generated at <https://www.gigacalculator.com/calculators/correlation-coefficient-calculator.php>.

III. RESULTS

Length in females were related to surface area (Fig. 1: $r=0.921$, $r^2=0.8482$, $n=22$, $p<0.00001$)

and length in males was related to surface area (Fig. 2: $r=0.9494$, $r^2=0.9014$, $n=22$, $p<0.00001$).

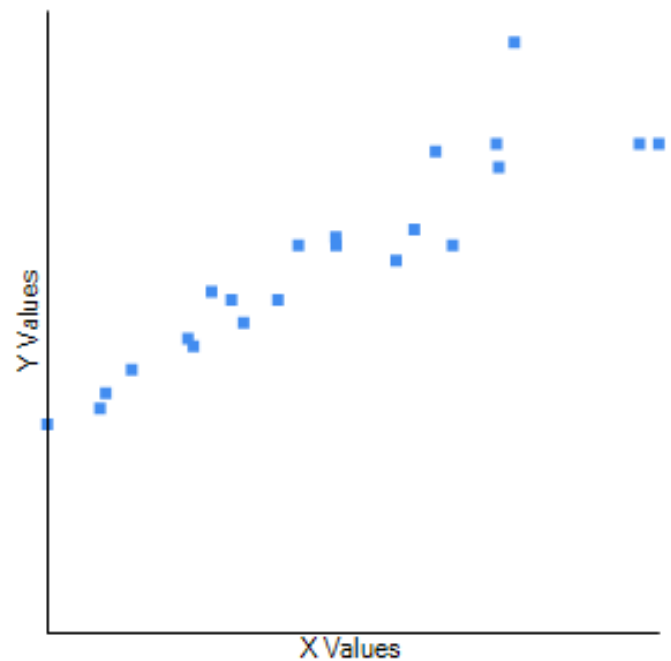


Fig. 1 Length in females correlated to surface area in *Centrobolus* Cook, 1897.

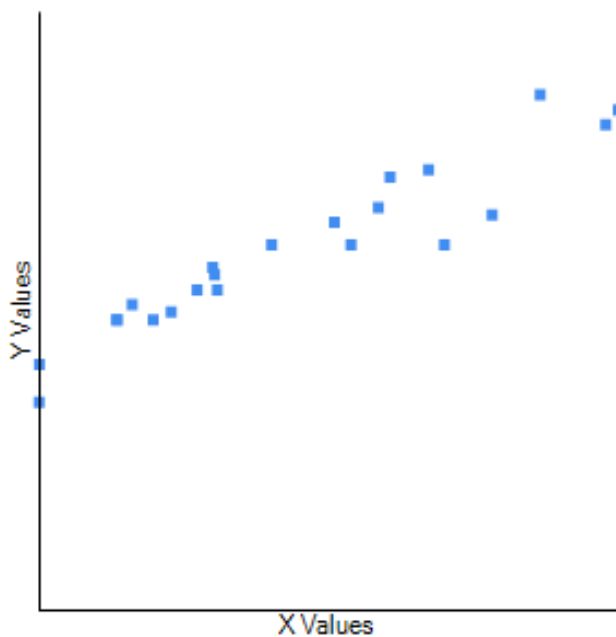


Fig. 2 Length in males correlated to surface area in *Centrobolus* Cook, 1897.

IV. DISCUSSION

The significant differences between males and females in surface area are known in this genus [68]. There is a correlation between length and surface area. This is an addition to one of the many correlates with body size in millipedes.

REFERENCES

- O. F. Cook, "New relatives of *Spirobolus giganteus*,¹ *Brandtia* (A series of occasional papers on Diplopoda and other Arthropoda), vol. 18, pp. 73-75, 1897.
- M. COOPER, "Sperm competition in the millipede *Chersastus ruber* (Diplopoda: Pachybolidae)," The University of Cape Town, pp. 1-29, 1995.
- M. I. Cooper, S. R. Telford, "Sperm competition in three *Chersastus* millipedes (Diplopoda, Trigonulidae)," 26th Symposium of the Zoological Society of Southern Africa (Integrating Zoology: Subdisciplines and the Subcontinent), University of Pretoria, Pretoria, 8-12 July, p. 13, 1996. ISBN: 1-86854-059-6..
- M. I. Cooper, "Ectoparasite-mediated sexual selection in spirobolid millipedes," In: Robertson, Hamish (ed.) Proceedings of the joint congress of the Entomological Society of Southern Africa (11th congress) and the African Association of Insect Scientists (12th congress), Stellenbosch, 30 June-4 July, pp. 223-224, 1997. ISBN : WISC:89058769605. (poster).
- M. I. Cooper, "Indiscriminate male mating behaviour in spirobolid millipedes," 27th Symposium of the Zoological Society of Southern Africa, University of Cape Town, Cape Town, 7-11 July, p. 105, 1997.
- M. Cooper, "MILLIPEDES AND THE "MINIATURE FIVE MILLION"," African Wildlife, vol. 52, no. 5, pp. 30-31, 1998..
- M. I. COOPER, "MATING DYNAMICS OF SOUTH AFRICAN FOREST MILLIPEDES *CENTROBOLUS* (DIPLOPODA: PACHYBOLIDAE)," THE UNIVERSITY OF CAPE TOWN, pp. 1-141, 1998. <https://hdl.handle.net/11427/17555>.
- M. Cooper, "Sexual selection in sympatric spirobolid millipedes," 28th Symposium of the Zoological Society of Southern Africa, University of Cape Town, 1998. (poster).
- M. I. Cooper, M. A. du Plessis, "Biodiversity hotspots in the developing world," Trends in Ecology & Evolution, vol. 13, no. 10, pp. 409, 1998. ISSN 0169-5347, [https://doi.org/10.1016/S0169-5347\(98\)01469-4](https://doi.org/10.1016/S0169-5347(98)01469-4).
- M. Cooper, "P2 or not P2?" 29th Symposium of the Zoological Society of Southern Africa, University of the North, Limpopo Province, July, 1999. (poster).
- M. I. Cooper, S. R. Telford, "Copulatory Sequences and Sexual Struggles in Millipedes," Journal of Insect Behavior vol. 13, pp. 217-230, 2000. <https://doi.org/10.1023/A:1007736214299>.
- M. I. Cooper, "Sex ratios, mating frequencies and relative abundance of sympatric millipedes in the genus *Chersastus* (Diplopoda: Pachybolidae)," Arthropods, vol. 3, no. 4, pp. 174-176, 2014.
- M. I. Cooper, "Sexual size dimorphism and corroboration of Rensch's rule in *Chersastus* millipedes (Diplopoda: Pachybolidae)," J. Entomol. Zool. Stud. vol. 2, no. 6, pp. 264-266, 2014. DOI: 10.22271/j.ento.2014.v2.i6e.452 <http://www.entomoljournal.com/archives/2014/vol2issue6/PartE/47.pdf>.
- M. I. Cooper, "Competition affected by re-mating interval in a myriapod," J. Entomol. Zool. Stud. vol. 3, no. 4, pp. 77-78, 2015. DOI: 10.22271/j.ento.2015.v3.i4b.550 <http://www.entomoljournal.com/archives/2015/vol3issue4/PartB/3-4-3.pdf>.
- M. I. Cooper, "Elaborate gonopods in the myriapod genus *Chersastus* (Diplopoda: Trigonulidae)," J. Entomol. Zool. Stud. vol. 3, no. 4, pp. 235-238, 2015. DOI: 10.22271/j.ento.2015.v3.i4d.573 <http://www.entomoljournal.com/archives/2015/vol3issue4/PartD/3-3-110.pdf>.
- M. I. Cooper, "Sperm storage in *Centrobolus* spp. and observational evidence for egg simulation," J. Entomol. Zool. Stud. vol. 4, no. 1, pp. 127-129, 2016. DOI: 10.22271/j.ento.2016.v4.i1b.797

- <https://www.entomoljournal.com/archives/2016/vol4issue1/PartB/3-6-81.pdf>.
17. M. I. Cooper, "Symmetry in ejaculate volumes of *Centrobolus inscriptus* Attems (Spiroboloidea: Trigoniulidae)," International Journal of Entomological Research, vol. 1, no. 2, pp. 14-15, 2016. <http://www.entomologyjournals.com/archives/2016/vol1/issue2>.
 18. M. I. Cooper, "Confirmation of four species of *Centrobolus* Cook (Spirobolida: Trigoniulidae) based on gonopod ultrastructure," Int. J. Entomol. Res. vol. 1, no. 3, pp. 07-09, 2016. <http://www.entomologyjournals.com/archives/2016/vol1/issue3>.
 19. M. I. Cooper, "Fire millipedes obey the female sooner norm in cross mating *Centrobolus* (Myriapoda)," J. Entomol. Zool. Stud. vol. 4, no. 1, pp. 173-174, 2016. DOI: 10.22271/j.ento.2016.v4.i1c.802 <http://www.entomoljournal.com/archives/2016/vol4issue1/PartC/3-5-82.pdf>.
 20. M. I. Cooper, "Symmetry in ejaculate volumes of *Centrobolus inscriptus* Attems (Spiroboloidea: Trigoniulidae)," J. Entomol. Zool. Stud. vol. 4, no. 1, pp. 386-387, 2016. DOI: 10.22271/j.ento.2016.v4.i1f.833 <http://www.entomoljournal.com/archives/2016/vol4issue1/PartF/4-1-21.pdf>.
 21. M. I. Cooper, "Instantaneous insemination in the millipede *Centrobolus inscriptus* (Spirobolida: Trigoniulidae) determined by artificially-terminated mating," J. Entomol. Zool. Stud. vol. 4, no. 1, pp. 487-490, 2016. DOI: 10.22271/j.ento.2016.v4.i1g.847 <http://www.entomoljournal.com/archives/2016/vol4issue1/PartG/4-1-50-695.pdf>.
 22. M. I. Cooper, "Gonopod mechanics in *Centrobolus* Cook (Spirobolida: Trigoniulidae) II. Images," J. Entomol. Zool. Stud. vol. 4, no. 2, pp. 152-154, 2016. DOI: 10.22271/j.ento.2016.v4.i2c.890 <http://www.entomoljournal.com/archives/2016/vol4issue2/PartC/4-2-55.pdf>.
 23. M. Cooper, "Post-insemination associations between males and females in Diplopoda," J. Entomol. Zool. Stud. vol. 4, no. 2, pp. 283-285, 2016. DOI: 10.22271/j.ento.2016.v4.i2d.908 <http://www.entomoljournal.com/archives/2016/vol4issue2/PartD/4-2-63.pdf>.
 24. M. I. Cooper, "Heavier-shorter-wider females in the millipede *Centrobolus inscriptus* Attems (Spirobolida: Trigoniulidae)," J. Entomol. Zool. Stud. vol. 4, no. 2, pp. 509-510, 2016. DOI: 10.22271/j.ento.2016.v4.i2g.937 <http://www.entomoljournal.com/archives/2016/vol4issue2/PartG/4-3-60.pdf>.
 25. M. I. Cooper, "Sexual bimaturism in the millipede *Centrobolus inscriptus* Attems (Spirobolida: Trigoniulidae)," J. Entomol. Zool. Stud. vol. 4, no. 3, pp. 86-87, 2016. DOI: 10.22271/j.ento.2016.v4.i3b.961 <http://www.entomoljournal.com/archives/2016/vol4issue3/PartB/4-3-44.pdf>.
 26. M. I. Cooper, "Tarsal pads of *Centrobolus* Cook (Spiroboloidea: Trigoniulidae)," J. Entomol. Zool. Stud. vol. 4, no. 3, pp. 385-386, 2016. DOI: 10.22271/j.ento.2016.v4.i3f.1008 <http://www.entomoljournal.com/archives/2016/vol4issue3/PartF/4-3-40-751.pdf>.
 27. M. I. Cooper, "Confirmation of four species of *Centrobolus* Cook (Spirobolida: Trigoniulidae) based on gonopod ultrastructure," J. Entomol. Zool. Stud. vol. 4, no. 4, pp. 389-391, 2016. DOI: 10.22271/j.ento.2016.v4.i4f.1065 <http://www.entomoljournal.com/archives/2016/vol4issue4/PartF/4-3-118-307.pdf>.
 28. M. I. Cooper, "Sperm storage in *Centrobolus inscriptus* Attems (Spirobolida: Trigoniulidae)," J. Entomol. Zool. Stud. vol. 4, no. 4, pp. 392-393, 2016. DOI: 10.22271/j.ento.2016.v4.i4f.1066 <http://www.entomoljournal.com/archives/2016/vol4issue4/PartF/4-4-16-207.pdf>.
 29. M. I. Cooper, "Sperm dumping in *Centrobolus inscriptus* Attems (Spirobolida: Trigoniulidae)," J. Entomol. Zool. Stud. vol. 4, no. 4, pp. 394-395, 2016. DOI: 10.22271/j.ento.2016.v4.i4f.1067 <http://www.entomoljournal.com/archives/2016/vol4issue4/PartF/4-4-17-663.pdf>.
 30. M. I. Cooper, "Syncopulatory mate-guarding affected by predation in the aposematic millipede *Centrobolus inscriptus* in a swamp forest," J. Entomol. Zool. Stud. vol. 4, no. 6, pp. 483-484, 2016. DOI: 10.22271/j.ento.2016.v4.i6g.1376 <http://www.entomoljournal.com/archives/2016/vol4issue6/PartG/4-6-114-767.pdf>.
 31. M. I. Cooper, "The relative sexual size dimorphism of *Centrobolus inscriptus* compared to 18 congeners," J. Entomol. Zool. Stud. vol. 4, no. 6, pp. 504-505, 2016. DOI: 10.22271/j.ento.2016.v4.i6g.1381 <http://www.entomoljournal.com/archives/2016/vol4issue6/PartG/4-6-123-254.pdf>.
 32. M. I. Cooper, "Do females control the duration of copulation in the aposematic millipede *Centrobolus inscriptus*?" J. Entomol. Zool. Stud. vol. 4, no. 6, pp. 623-625, 2016. DOI: 10.22271/j.ento.2016.v4.i6i.1396 <http://www.entomoljournal.com/archives/2016/vol4issue6/PartI/4-6-133-214.pdf>.
 33. M. I. Cooper, "The influence of male body mass on copulation duration in *Centrobolus inscriptus* (Attems)," J. Entomol. Zool. Stud. vol. 4, no. 6, pp. 804-805, 2016. DOI: 10.22271/j.ento.2016.v4.i6k.08 <http://www.entomoljournal.com/archives/2016/vol4issue6/PartK/4-6-166-899.pdf>.
 34. M. I. Cooper, "Sexual conflict over the duration of copulation in *Centrobolus inscriptus* (Attems)," J.

- Entomol. Zool. Stud. vol. 4, no. 6, pp. 852-854, 2016. DOI: 10.22271/j.ento.2016.v4.i6l.04
<http://www.entomoljournal.com/archives/2016/vol4issue6/PartL/4-6-155-599.pdf>.
35. M. I. Cooper, "The affect of female body width on copulation duration in *Centrobolus inscriptus* (Attems)," J. Entomol. Zool. Stud. vol. 5, no. 1, pp. 732-733, 2017. DOI: 10.22271/j.ento.2017.v5.i1j.10
<http://www.entomoljournal.com/archives/2017/vol5issue1/PartJ/5-1-92-221.pdf>.
36. M. I. Cooper, "Size matters in myriapod copulation," J. Entomol. Zool. Stud. vol. 5, no. 2, pp. 207-208, 2017. DOI: 10.22271/j.ento.2017.v5.i2c.10
<http://www.entomoljournal.com/archives/2017/vol5issue2/PartC/4-6-108-171.pdf>.
37. M. I. Cooper, "Relative sexual size dimorphism in *Centrobolus digrammus* (Pocock) compared to 18 congeners," J. Entomol. Zool. Stud. vol. 5, no. 2, pp. 1558-1560, 2017. DOI: 10.22271/j.ento.2017.v5.i2u.04
<http://www.entomoljournal.com/archives/2017/vol5issue2/PartU/5-2-199-639.pdf>.
38. M. I. Cooper, "Relative sexual size dimorphism in *Centrobolus fulgidus* (Lawrence) compared to 18 congeners," J. Entomol. Zool. Stud. vol. 5, no. 3, pp. 77-79, 2017. DOI: 10.22271/j.ento.2017.v5.i3b.01
<http://www.entomoljournal.com/archives/2017/vol5issue3/PartB/5-2-198-656.pdf>.
39. Cooper, "Relative sexual size dimorphism *Centrobolus ruber* (Attems) compared to 18 congeners," J. Entomol. Zool. Stud. vol. 5, no. 3, pp. 180-182, 2017. DOI: 10.22271/j.ento.2017.v5.i3c.07
<http://www.entomoljournal.com/archives/2017/vol5issue3/PartC/5-2-187-598.pdf>.
40. M. I. Cooper, "Copulation and sexual size dimorphism in worm-like millipedes," J. Entomol. Zool. Stud. vol. 5, no. 3, pp. 1264-1266, 2017. DOI: 10.22271/j.ento.2017.v5.i3r.03 available at <https://www.coursehero.com/file/56889696>.
41. M. I. Cooper, "Allometry of copulation in worm-like millipedes," J. Entomol. Zool. Stud. vol. 5, no. 3, pp. 1720-1722, 2017. DOI: 10.22271/j.ento.2017.v5.i3x.03
<http://www.entomoljournal.com/archives/2017/vol5issue3/PartX/5-3-233-698.pdf>.
42. M. Cooper, "Re-assessment of Rensch's rule in *Centrobolus*," J. Entomol. Zool. Stud. vol. 5, no. 6, pp. 2408-2410, 2017. DOI: 10.22271/j.ento.2017.v5.i6ag.04
<http://www.entomoljournal.com/archives/2017/vol5issue6/PartAG/5-6-355-856.pdf>.
43. M. I. Cooper, "Allometry for sexual dimorphism in millipedes (Diplopoda)," J. Entomol. Zool. Stud. vol. 6, no. 1, pp. 91-96, 2018. DOI: 10.22271/j.ento.2018.v6.i1b.03
<http://www.entomoljournal.com/archives/2018/vol6issue1/PartB/5-6-327-547.pdf>.
44. M. I. Cooper, "Sexual dimorphism in pill millipedes (Diplopoda)," J. Entomol. Zool. Stud. vol. 6, no. 1, pp. 613-616, 2018. DOI: 10.22271/j.ento.2018.v6.i1i.03
<http://www.entomoljournal.com/archives/2018/vol6issue1/PartI/5-6-352-508.pdf>.
45. M. I. Cooper, "Sexual size dimorphism and the rejection of Rensch's rule in Diplopoda (Arthropoda)," J. Entomol. Zool. Stud. vol. 6, no. 1, pp. 1582-1587, 2018. DOI: 10.22271/j.ento.2018.v6.i1v.07
<http://www.entomoljournal.com/archives/2018/vol6issue1/PartV/5-6-290-837.pdf>.
46. M. I. Cooper, "Trigoniulid size dimorphism breaks Rensch," J. Entomol. Zool. Stud. vol. 6, no. 3, pp. 1232-1234, 2018. DOI: 10.22271/j.ento.2018.v6.i3.9.09
<http://www.entomoljournal.com/archives/2018/vol6issue3/PartQ/6-3-170-722.pdf>.
47. M. I. Cooper, "Volumes of *Centrobolus albitarsus* (Lawrence, 1967)," Int. J. Entomol. Res. vol. 3, no. 4, pp. 20-21, 2018. <http://www.entomologyjournals.com/archives/2018/vol3/issue4>.
48. M. Cooper, "A review of studies on the fire millipede genus *centrobolus* (diplopoda: trigoniulidae)," J. Entomol. Zool. Stud. vol. 6, no. 4, pp. 126-129, 2018. DOI: 10.22271/j.ento.2018.v6.i4.2.06
<http://www.entomoljournal.com/archives/2018/vol6issue4/PartC/6-3-87-275.pdf>.
49. M. Cooper, "*Centrobolus anulatus* (Attems, 1934) reversed sexual size dimorphism," J. Entomol. Zool. Stud. vol. 6, no. 4, pp. 1569-1572, 2018. DOI: 10.22271/j.ento.2018.v6.i4.13.16
<http://www.entomoljournal.com/archives/2018/vol6issue4/PartZ/6-4-277-483.pdf>.
50. M. Cooper, "Allometry in *Centrobolus*," J. Entomol. Zool. Stud. vol. 6, no. 6, pp. 284-286, 2018. DOI: 10.22271/j.ento.2018.v6.i6.3.07
<http://www.entomoljournal.com/archives/2018/vol6issue6/PartE/6-5-322-417.pdf>.
51. M. Cooper, "Centrobolus size dimorphism breaks Rensch's rule," Scholars' Press, Mauritius. pp. 1-48, 2018. ISBN: 978-3-659-83990-0. <https://www.academia.edu/77887053>.
52. M. Cooper, "Centrobolus size dimorphism breaks Rensch's rule," Arthropod., vol. 7, no. 3, pp. 48-52, 2018.
53. M. Cooper, "Centrobolus dubius (Schubart, 1966) Monomorphism," International Journal of Research Studies in Zoology, vol 4, no. 3, pp. 17-21, 2018. <http://arcjournals.org/pdfs/ijrsz/v4-i3/3.pdf>.
54. M. Cooper, "Centrobolus lawrencei (Schubart, 1966) monomorphism," Arthropod., vol. 7, no. 4, pp. 82-86, 2018. <http://www.iaees.org/publications/journals/arthropods/>

- [articles/2018-7\(4\)/Centrobolus-lawrencei-monomorphism.pdf](http://www.ijesird.com/articles/2018-7(4)/Centrobolus-lawrencei-monomorphism.pdf).
55. M. Cooper, "Confirmation of twenty-one species of Centrobolus Cook (Diplopoda: Pachybolidae) based on length and width data," 2018.
56. M. Cooper, "Centrobolus sagatinus sexual size dimorphism based on differences in horizontal tergite widths," J. Entomol. Zool. Stud. vol. 6, no. 6, pp. 275-277, 2018. DOI: 10.22271/j.ento.2018.v6.i6.3.05 <http://www.entomoljournal.com/archives/2018/vol6issue6/PartE/6-5-323-505.pdf>.
57. M. Cooper, "Centrobolus silvanus dimorphism based on tergite width," Glob. J. Zool. vol. 3, no. 1, pp. 003-005, 2018. <https://doi.org/10.17352/gjz.000010>.
58. M. Cooper, "A review on studies of behavioural ecology of Centrobolus (Diplopoda, Spirobolida, Pachybolidae) in southern Africa," Arthropod., vol. 8, no. 1, pp. 38-44, 2019.
59. M. I. Cooper, "Lawrence's red millipede Centrobolus lawrencei shows length-based variability and size dimorphism," J. Entomol. Zool. Stud. vol. 7, no. 2, pp. 1037-1039, 2019. DOI: 10.22271/j.ento.2019.v7.i2.9.07 <http://www.entomoljournal.com/archives/2019/vol7issue2/PartQ/7-2-114-662.pdf>.
60. M. Cooper, "Centrobolus titanophilus size dimorphism shows width-based variability," Arthropod., vol. 8, no. 2, pp. 80-86, 2019.
61. M. Cooper, "Non-significant intersexual differences in millipede mass," J. Entomol. Zool. Stud. vol. 7, no. 3, pp. 763-765, 2019. DOI: 10.22271/j.ento.2019.v7.i3m.5267 <http://www.entomoljournal.com/archives/2019/vol7issue3/PartM/7-3-90-458.pdf>.
62. M. I. Cooper, "Quasi-experimental determination of a mass standard in the forest millipede Centrobolus inscriptus," J. Entomol. Zool. Stud. vol. 7, no. 3, pp. 772-774, 2019. DOI: 10.22271/j.ento.2019.v7.i3m.5269 <http://www.entomoljournal.com/archives/2019/vol7issue3/PartM/7-3-58-913.pdf>.
63. M. I. Cooper, "Underlying sperm precedence pattern in the millipede Centrobolus inscriptus (Attems, 1928) (Diplopoda, Pachybolidae)," J. Entomol. Zool. Stud. vol. 7, no. 3, pp. 1066-1069, 2019. DOI: 10.22271/j.ento.2019.v7.i3r.5319 <http://www.entomoljournal.com/archives/2019/vol7issue3/PartR/7-3-106-957.pdf>.
64. M. Cooper, "When is the change in sperm precedence in the millipede Centrobolus inscriptus (Attems, 1928) (Diplopoda, Pachybolidae)?" J. Entomol. Zool. Stud. vol. 7, no. 4, pp. 183-186, 2019. DOI: 10.22271/j.ento.2019.v7.i4c.5439 <http://www.entomoljournal.com/archives/2019/vol7issue4/PartC/7-3-311-692.pdf>.
65. M. Cooper, "Julid millipede and spirobolid millipede gonopod functional equivalents," J. Entomol. Zool. Stud. vol. 7, no. 4, pp. 333-335, 2019. DOI: 10.22271/j.ento.2019.v7.i4f.5465 <http://www.entomoljournal.com/archives/2019/vol7issue4/PartF/7-3-329-431.pdf>.
66. M. Cooper, "Size dimorphism and directional selection in forest millipedes," Arthropod., vol. 8, no. 3, pp. 102-109, 2019. [http://www.iaees.org/publications/journals/arthropods/articles/2019-8\(3\)/size-dimorphism-and-directional-selection-in-forest-millipedes.pdf](http://www.iaees.org/publications/journals/arthropods/articles/2019-8(3)/size-dimorphism-and-directional-selection-in-forest-millipedes.pdf).
67. M. Cooper, "Xylophagous millipede surface area to volume ratios are size dependent in forests," Arthropod., vol. 8, no. 4, pp. 127-136, 2019.
68. M. Cooper, "Size dimorphism in six juliform millipedes," Arthropod., vol. 8, no. 4, pp. 137-142, 2019.
69. M. Cooper, "Year-round correlation between mass and copulation duration in forest millipedes," Arthropod., vol. 9, no. 1, pp. 15-20, 2020.
70. M. Cooper, "Kurtosis and skew show longer males in Centrobolus," Arthropod., vol. 9, no. 1, pp. 21-26, 2020.
71. M. Cooper, "Studies of behavioural ecology of Centrobolus," LAP LAMBERT Academic Publishing, Mauritius. pp. 1-420, 2020. ISBN: 978-620-2-52046-1.
72. M. Cooper, "Mating dynamics of South African forest millipedes," LAP LAMBERT Academic Publishing, Mauritius. pp. 1-164, 2020. ISBN: 978-620-0-58569-1.
73. M. Cooper, "Behavioural ecology of Centrobolus," LAP LAMBERT Academic Publishing, Mauritius. pp. 1-520, 2020. ISBN: 978-620-0-50406-7.
74. M. Cooper, "Zoomorphic variation with copulation duration in Centrobolus," Arthropod., vol. 9, no. 2, pp. 63-67, 2020. [http://www.iaees.org/publications/journals/arthropods/articles/2020-9\(2\)/zoomorphic-variation-with-copulation-duration-in-Centrobolus.pdf](http://www.iaees.org/publications/journals/arthropods/articles/2020-9(2)/zoomorphic-variation-with-copulation-duration-in-Centrobolus.pdf).
75. M. Cooper, "Latitudinal-size trend in eight species of Centrobolus," J. Entomol. Zool. Stud. vol. 8, no. 2, pp. 122-127, 2020. <http://www.entomoljournal.com/archives/2020/vol8issue2/PartC/8-1-381-253.pdf>.
76. M. Cooper, "Longitudinal-size trend in eight species of Centrobolus," Intern. J. Zool. Invest. vol. 6, no. 1, pp. 58-64, 2020. <https://doi.org/10.33745/ijzi.2020.v06i01.005>.
77. M. Cooper, "Correction: Centrobolus dubius (Schubart, 1966) Monomorphism," Int. J. Res. Stud. Zool. vol. 6, no. 2, pp. 25-28, 2020. <http://www.arcjournals.org/pdfs/ijrsz/v6-i2/3.pdf>.
78. M. Cooper, "Latitudinal and longitudinal gradients in Old World forest millipedes," LAP LAMBERT Academic Publishing. pp. 77, 2021 ISBN: 978-620-3-02454-8.

79. M. Cooper, "Intraxual and intersexual size variation in *Centrobolus Cook*, 1897," Scholars' Press, Mauritius. pp. 1-56, 2021. ISBN: 978-613-8-95101-8.
80. M. Cooper, "Size-assortment in *Centrobolus Cook*, 1897," Scholars' Press, Mauritius. pp. 1-52, 2021. ISBN: 978-613-8-95118-6. <http://www.megabooks.sk/p/18255119>.
81. M. Cooper, "Wewnątrzplciowa i międzypłciowa zmienność wielkości u *Centrobolus Cook*, 1897," Scienia Scripts, Mauritius. pp. 1-52, 2021. ISBN: 978-620-3-50733-1. <http://www.megabooks.cz/p/17829353>.
82. M. Cooper, "Varietade de tamanhos no *Centrobolus Cook*, 1897," Novas Edições Acadêmicas, Mauritius. pp. 1-52, 2021. ISBN: 978-620-3-46650-8.
83. M. Cooper, "Variação de tamanho intraxual e intersexual no *Centrobolus Cook*, 1897," Edições Nosso Conhecimento, Scienia Scripts, Mauritius. pp. 1-52, 2021. ISBN: 978-620-3-50735-5.
84. M. Cooper, "Variazione di taglia intrasessuale e intersessuale in *Centrobolus Cook*, 1897," Scienia Scripts, Mauritius. pp. 1-52, 2021. ISBN: 978-620-3-50731-7. <http://www.megabooks.sk/p/18462116>.
85. M. Cooper, "Variation de taille intraxuelle et interaxuelle chez *Centrobolus Cook*, 1897," Scienia Scripts, Mauritius. pp. 1-52, 2021. ISBN: 978-620-3-50730-0. <http://www.megabooks.sk/p/18462115>.
86. M. Cooper, "Intraxuelle und interaxuelle größenvariation bei *Centrobolus Cook*, 1897," Scienia Scripts, Mauritius. pp. 1-52, 2021. ISBN: 978-620-3-50729-4. <http://www.megabooks.cz/p/17470313>.
87. M. Cooper, "Size-assortment in *Centrobolus Cook*, 1897 (Diplopoda: Pachybolidae)," Scholars' Press, Mauritius. pp. 1-52, 2021. ISBN: 978-613-8-95105-6. <http://www.megabooks.sk/p/18254871>.
88. M. Cooper, "Variação da duração da cópula em milípedes semelhantes a vermes," Novas Edições Acadêmicas, Mauritius. pp. 1-56, 2021. ISBN: 978-620-3-46666-9.
89. M. Cooper, "Surtido de tamaño en *Centrobolus Cook*, 1897," Editorial Académica Española, Mauritius. pp. 1-56, 2021. ISBN: 978-620-3-03960-3.
90. M. Cooper, "Größen-Sortierung bei *Centrobolus Cook*, 1897 (Diplopoda: Pachybolidae)," Südwestdeutscher Verlag für Hochschulschriften, Scienia Scripts, Mauritius. pp. 1-52, 2021. ISBN: 978-620-3-54955-3. <http://www.dodax.co.uk/en-gb/books-audiobooks/zoology/cooper-mark-groessensortierung-bei-centrobolus-cook-1897-diplopoda-pachybolidae-dp3Q15G7L5H49>.
91. M. Cooper, "Cambio en la duración de la cópula en ciempiés gusano," Editorial Académica Española, Mauritius. pp. 1-56, 2021. ISBN: 978-620-3-03965-8.
92. M. Cooper, "Размерный ассортимент в *Centrobolus Cook*, 1897 г," Scienia Scripts, Mauritius. pp. 1-52, 2021. ISBN: 978-620-3-59606-9. <http://my-shop.ru/shop/product/4534060.html>.
93. M. Cooper, "Variation de durée de copulation dans les mille-pattes vermifuges," Presses Académiques Francophones, Mauritius. pp. 1-52, 2021. ISBN: 978-3-8416-3326-2.
94. M. Cooper, "Sortimento de tamanhos em *Centrobolus Cook*, 1897," Edições Nosso Conhecimento, Mauritius. pp. 1-52, 2021. ISBN: 978-620-3-59608-3. <http://www.megabooks.sk/p/18456483>.
95. M. Cooper, "Size assortment in *Centrobolus Cook*, 1897," Our Knowledge Publishing, Mauritius. pp. 1-52, 2021. ISBN: 978-620-3-59602-1. <http://www.megabooks.sk/p/18456478>.
96. M. Cooper, "Größensortierung bei *Centrobolus Cook*, 1897," Verlag Unser Wissen, Mauritius. pp. 1-52, 2021. ISBN: 978-620-3-59601-4. <http://www.megabooks.sk/p/18192206>.
97. M. Cooper, "Groottesortering bij *Centrobolus Cook*, 1897," Uitgeverij Onze Kennis, Mauritius. pp. 1-52, 2021. ISBN: 978-620-3-59605-2.
98. M. Cooper, "Assortimento di dimensioni in *Centrobolus Cook*, 1897," Edizioni Sapienza, Mauritius. pp. 1-52, 2021. ISBN: 978-620-3-59604-5. <http://www.megabooks.sk/p/18456480>.
99. M. Cooper, "Assortiment de tailles chez *Centrobolus Cook*, 1897," Editions Notre Savoir, Mauritius. pp. 1-52, 2021. ISBN: 978-620-3-59603-8. <http://www.megabooks.sk/p/18456479>.
100. M. Cooper, "Asortyment wielkości u *Centrobolus Cook*, 1897 (Diplopoda: Pachybolidae)," Wydawnictwo Nasza Wiedza, Mauritius. pp. 1-52, 2021. ISBN: 978-620-3-59607-6.
101. M. Cooper, "Zmiana czasu trwania kopulacji w krocionogach przypominających robaki," Wydawnictwo Nasza Wiedza, Mauritius. pp. 1-56, 2021. ISBN: 978-620-3-62161-7. <http://www.megabooks.sk/p/18456980>.
102. M. Cooper, "Verandering in copulatieduur bij wormduizendpoten (Juliformes)," Uitgeverij Onze Kennis. pp. 1-56, 2021. ISBN: 978-6203621600.
103. M. Cooper, "Veränderung der Kopulationsdauer bei Wurmtausendfüßern," Verlag Unser Wissen. pp. 1-52, 2021. ISBN: 978-620-3-62156-3. <http://www.megabooks.sk/p/18258985>.
104. M. Cooper, "Modification de la durée de la copulation chez les millipedes vermiformes," Editions Notre Savoir, Mauritius. pp. 1-56, 2021. ISBN: 978-620-3-62158-7. <http://www.megabooks.sk/p/18456978>.
105. M. Cooper, "Modifica della durata della copulazione nei millepiedi vermi," Edizioni Sapienza, Mauritius. pp. 1-56, 2021. ISBN: 978-620-3-62159-4. <http://www.megabooks.sk/p/18456979>.
106. M. Cooper, "Copulation duration variation in worm-like millipedes," Our Knowledge Publishing,

- Mauritius. pp. 1-52, 2021. ISBN: 978-620-3-62157-0.
<http://www.megabooks.sk/p/18456977>.
- 107.M. Cooper, "Alteracao na duracao da copula nas centopeias de minhocas," Edicoes Nosso Conhecimento, Mauritius. pp. 1-56, 2021. ISBN: 978-620-3-62162-4.
<http://www.megabooks.sk/p/18456981>.
- 108.M. Cooper, "Zmiana czasu trwania kopulacji w krocionogach przypominających robaki," Globe Edit, Latvia. pp. 1-56, 2021. ISBN: 978-620-0-62248-8.
- 109.M. Cooper, "Variasjon i kokulasjonsvariasjon i ormlignende millipeder," Globe Edit, Latvia. pp. 1-52, 2021. ISBN: 978-620-0-62250-1.
- 110.M. Cooper, "Copulation duration variation in worm-like millipedes," Scholars' Press, Mauritius. pp. 1-52, 2021. ISBN: 978-3-639-66208-5.
- 111.M. Cooper, "Variatie in copulatieuur in wormachtige duizendpoten," Globe Edit, Latvia. pp. 1-52, 2021. ISBN: 978-620-0-62258-7.
- 112.M. Cooper, "Variation i kopulationsvarighed i ormelignende tusindben," Globe Edit, Latvia. pp. 1-56, 2021. ISBN: 978-620-0-62257-0.
- 113.M. Cooper, "İçeriği Centrobolus Cook boyut aralığı, 1897 (Diplopoda: Pachybolidae)," LAP LAMBERT Academic Publishing, Mauritius. pp. 1-56, 2021. ISBN: 978-620-3-83963-0.
- 114.M. Cooper, "Kopuleringsstidsvariation i maskliknande millipeder," Globe Edit, Latvia. pp. 1-52, 2021. ISBN: 978-620-0-62277-8.
- 115.M. Cooper, "Variation de durée de copulation dans les mille-pattes vermifuges," Blessed Hope Publishing. pp. 1-56, 2021. ISBN: 978-3841633269.
<http://www.megabooks.sk/p/18361163>.
- 116.M. Cooper, "フォーム様ミリペダスにおける交尾期間変動," Globe Edit, Latvia. pp. 1-56, 2021. ISBN: 978-620-0-62260-0.
- 117.M. Cooper, "Parittelun keston vaihtelu matomaisten millipedes," Globe Edit, Latvia. pp. 1-52, 2021. ISBN: 978-620-0-62259-4.
- 118.M. Cooper, "Variația duratei copulării în milipelele asemănătoare viermilor," Globe Edit, Latvia. pp. 1-56, 2021. ISBN: 978-620-0-62255-6.
- 119.M. Cooper, "A pázás időtartama a féreg-szerű millipelek változása," Globe Edit, Latvia. pp. 1-52, 2021. ISBN: 978-620-0-62261-7.
- 120.M. Cooper, "蠕蟲狀千足蟲的複製持續時間變化," pp. 1-52, 2021. Goldenlight publishing, Republic of Moldova. ISBN: 978-620-2-41290-2.
- 121.M. Cooper, "웜과 같은 밀리페드의 교화 지속 시간 변화 (줄리포미아)," Globe Edit, Latvia. pp. 1-52, 2021. ISBN: 978-620-0-62533-5.
- 122.M. Cooper, "Mass covaries with volume in forest millipedes Centrobolus Cook, 1897," J. Entomol. Zool. Stud. vol. 9, no. 6, pp. 190-192, 2021.
<http://www.entomoljournal.com/archives/2021/vol9issue6/PartC/9-6-36-202.pdf>.
- 123.M. Cooper, "The inverse latitudinal gradient in species richness of forest millipedes: Pentazonia Brandt, 1833," J. Entomol. Zool. Stud. vol. 10, no. 1, pp. 01-04, 2022.
<http://www.entomoljournal.com/archives/2022/vol10issue1/PartA/9-6-47-884.pdf>.
- 124.M. Cooper, "The inverse latitudinal gradient in species richness of forest millipedes: Pachybolidae Cook, 1897," J. Entomol. Zool. Stud. vol. 10, no. 1, pp. 05-08, 2022.
<http://www.entomoljournal.com/archives/2022/vol10issue1/PartA/9-6-49-906.pdf>.
- 125.M. Cooper, "Longer Males Determined with Positive Skew and Kurtosis in Centrobolus (Diplopoda: Spirobolida: Pachybolidae)," New Visions in Biological Science Vol. 8, pp. 102-106, 2022.
<http://doi.org/10.9734/bpi/nvbs/v8/1876A>.
- 126.M. Cooper, "Study on Year-round Correlation between Mass and Copulation Duration in Forest Millipedes," New Visions in Biological Science Vol. 8, pp. 107-112, 2022. <http://doi.org/10.9734/bpi/nvbs/v8/1877A>.
- 127.M. Cooper, "Study on Size Dimorphism in Six Juliform Millipedes," New Visions in Biological Science Vol. 8, pp. 113-119, 2022. <http://doi.org/10.9734/bpi/nvbs/v8/1878A>.
- 128.M. Cooper, "Xylophagous Millipede Surface Area to Volume Ratios are Size-dependent in Forests: A Brief Study," New Visions in Biological Science Vol. 8, pp. 120-128, 2022. <http://doi.org/10.9734/bpi/nvbs/v8/1879A>.
- 129.M. Cooper, "A Study on Centrobolus titanophilus Size Dimorphism Shows Width-Based Variability," New Visions in Biological Science Vol. 8, pp. 129-135, 2022. <http://doi.org/10.9734/bpi/nvbs/v8/1880A>.
- 130.M. Cooper, "Study on Zoomorphic Variation with Copulation Duration in Centrobolus," New Visions in Biological Science Vol. 8, pp. 144-149, 2022. <http://doi.org/10.9734/bpi/nvbs/v8/1882A>.
- 131.M. Cooper, "The copulation duration allometry in Centrobolus (Diplopoda: Spirobolida: Pachybolidae)," J. Entomol. Zool. Stud. vol. 10, no. 1, pp. 63-68, 2022. <https://doi.org/10.22271/j.ento.2022.v10.i1a.8925>.
- 132.M. Cooper, "Behavioral ecology of Centrobolus (Diplopoda, Spirobolida, Pachybolidae) in Southern Africa," New Visions in Biological Science Vol. 9, pp. 1-6, 2022. <http://doi.org/10.9734/bpi/nvbs/v9/1883A>.
- 133.M. Cooper, "Study About Size Dimorphism and Directional Selection in Forest Millipedes," New Visions in Biological Science Vol. 9, pp. 7-13, 2022. <http://doi.org/10.9734/bpi/nvbs/v9/1884A>.
- 134.M. Cooper, "The Copulation duration Allometry in Centrobolus (Diplopoda: Spirobolida: Pachybolidae)," New Visions in Biological Science Vol. 9, pp. 21-28, 2022. <http://doi.org/10.9734/bpi/nvbs/v9/1891A>.

- 135.M. Cooper, "The Copulation duration Allometry in Worm-like Millipedes (Diplopoda: Chilognatha: Helminthomorpha)," *New Visions in Biological Science* Vol. 9, pp. 29-38, 2022. <http://doi.org/10.9734/bpi/nvbs/v9/1892A>.
- 136.M. Cooper, "Length and Width Correlations in *Centrobolus* Cook, 1897," *New Visions in Biological Science* Vol. 9, pp. 39-45, 2022. <http://doi.org/10.9734/bpi/nvbs/v9/1893A>.
- 137.M. Cooper, "Mating Order Establishes Male Size Advantage in the Polygynandrous Millipede *Centrobolus inscriptus* Attems, 1928," *New Visions in Biological Science* Vol. 9, pp. 46-51, 2022. <http://doi.org/10.9734/bpi/nvbs/v9/1894A>.
- 138.M. Cooper, "Why Sexual Size Dimorphism Increases with Longitude, Precipitation and Temperature and Decreases with Latitude in Forest Millipedes *Centrobolus* Cook, 1897," *New Visions in Biological Science* Vol. 9, pp. 58-67, 2022. <http://doi.org/10.9734/bpi/nvbs/v9/1896A>.
- 139.M. Cooper, "Bergmann's Rule: Size Correlates with Longitude and Temperature in Forest Millipedes *Centrobolus* Cook, 1897," *New Visions in Biological Science* Vol. 9, pp. 68-81, 2022. <http://doi.org/10.9734/bpi/nvbs/v9/1897A>.
- 140.M. Cooper, "The Inverse Latitudinal Gradient in Species Richness of Forest Millipedes: *Centrobolus* Cook, 1897," *New Visions in Biological Science* Vol. 9, pp. 82-88, 2022. <http://doi.org/10.9734/bpi/nvbs/v9/1898A>.
- 141.M. Cooper, "Total Body Rings Increase with Latitude and Decrease with Precipitation in Forest Millipedes *Centrobolus* Cook, 1897," *New Visions in Biological Science* Vol. 9, pp. 96-101, 2022. <http://doi.org/10.9734/bpi/nvbs/v9/1900A>.
- 142.M. Cooper, "Does sexual size dimorphism vary with longitude in forest millipedes *Centrobolus* Cook, 1897?" *International Journal of Recent Research in Thesis and Dissertation*, vol. 3, no. 1, pp. 1-5, 2022. <https://www.paperpublications.org/issue/IJRRTD/Issue-1-January-2022-June-2022>.
- 143.M. Cooper, "Does sexual size dimorphism vary with latitude in forest millipedes *Centrobolus* Cook, 1897?" *Int. J. Re. Res. Thesis Diss.*, vol. 3, no. 1, pp. 6-11, 2022. <https://www.paperpublications.org/issue/IJRRTD/Issue-1-January-2022-June-2022>.
- 144.M. Cooper, "Does sexual size dimorphism vary with temperature in forest millipedes *Centrobolus* Cook, 1897?" *Acta Entomol. Zool.*, vol 3, no. 1, pp. 08-11, 2022. <https://doi.org/10.33545/27080013.2022.v3.i1a.51>.
- 145.M. Cooper, "DOES SEXUAL SIZE DIMORPHISM VARY WITH MONTH WITH THE HIGHEST NUMBER OF RAINY DAYS IN FOREST MILLIPEDES *CENTROBOLUS* COOK, 1897," *Universe Int. J. Interdiscip. Res.*, vol. 2, no. 9, pp. 9-14, 2022. <https://www.doi-ds.org/doi/10.33545/27080013.2022.v3.i1a.57>.
- 146.M. Cooper, "PAIR-WISE COMPARISON OF SEXUAL SIZE DIMORPHISM AMONG NINE FACTORS IN FOREST MILLIPEDES *CENTROBOLUS* COOK, 1897," *Universe Int. J. Interdiscip. Res.*, vol. 2, no. 9, pp. 31-33, 2022. <https://www.doi-ds.org/doi/10.33545/27080013.2022.v3.i1a.58>.
- 147.M. Cooper, "Does sexual size dimorphism vary with female size in forest millipedes *Centrobolus* Cook, 1897?" *Acta Entomol. Zool.*, vol. 3, no. 1, pp. 15-18, 2022. <https://doi.org/10.33545/27080013.2022.v3.i1a.58>.
- 148.M. Cooper, "Does sexual size dimorphism vary with hours of sunshine throughout the year in forest millipedes *Centrobolus* Cook, 1897?" *Acta Entomol. Zool.*, vol. 3, no. 1, pp. 19-25, 2022. DOI: <https://doi.org/10.33545/27080013.2022.v3.i1a.58>.
- 149.M. Cooper, "DOES SEXUAL SIZE DIMORPHISM VARY WITH SPECIES RICHNESS IN FOREST MILLIPEDES *CENTROBOLUS* COOK, 1897?" *Universe Int. J. Interdiscip. Res.*, vol. 2, no. 10, pp. 25-29, 2022. <https://www.doi-ds.org/doi/10.33545/27080013.2022.v3.i1a.58>.
- 150.M. Cooper, "PAIR-WISE COMPARISON OF SEXUAL SHAPE DIMORPHISM AMONG FIFTEEN FACTORS IN FOREST MILLIPEDES *CENTROBOLUS* COOK, 1897," *Universe Int. J. Interdiscip. Res.*, vol. 2, no. 10, pp. 9-14, 2022. <https://www.doi-ds.org/doi/10.33545/27080013.2022.v3.i1a.58>.
- 151.M. I. Cooper, "Five factors effecting copulation duration in the breeding season in forest millipedes *Centrobolus* Cook, 1897," *Zoological and Entomological Letters*, vol. 2, no. 1, pp. 17-22, 2022. <https://www.zoologicaljournal.com/archives/2022.v2.i1.A.26>.
- 152.M. Cooper, "Does sexual size dimorphism vary with time in red millipedes *Centrobolus* Cook, 1897?" *Zool. Entomol. Lett.*, vol 2, no. 1, pp. 30-35, 2022. <https://www.zoologicaljournal.com/archives/2022.v2.i1.A.29>.
- 153.M. Cooper, "Mating frequencies of sympatric red millipedes differ across substrate due to absolute abundances," *Acta Entomol. Zool.*, vol. 3, no. 1, pp. 34-39, 2022. <https://doi.org/10.33545/27080013.2022.v3.i1a.62>.
- 154.M. Cooper, "Does sexual size dimorphism vary with maximum and minimum temperatures in red millipedes *Centrobolus* Cook, 1897?" *Zool. Entomol. Lett.*, vol. 2, no. 1, pp. 60-65, 2022. <https://www.zoologicaljournal.com/archives/2022.v2.i1.B.34>.

- 155.M. Cooper, "Does sexual size dimorphism vary with sex ratio in red millipedes *Centrobolus Cook, 1897?*" *Zool. Entomol. Lett.*, vol. 2, no. 1, pp. 66-68, 2022. <https://www.zoologicaljournal.com/archives/2022.v2.i1.B.35>.
- 156.M. Cooper, "Millipede mass: Intersexual differences," *Zool. Entomol. Lett.*, vol. 2, no. 1, pp. 69-70, 2022. <https://www.zoologicaljournal.com/archives/2022.v2.i1.B.36>.
- 157.M. I. Cooper, "Do copulation duration and sexual size dimorphism vary with absolute abundance in red millipedes *Centrobolus Cook, 1897?*" *Acta Entomol. Zool.*, vol. 3, no. 1, pp. 51-54, 2022. <https://www.actajournal.com/archives/2022.v3.i1.A.64> <https://doi.org/10.33545/27080013.2022.v3.i1a.64>.
- 158.M. Cooper, "DOES SEXUAL SIZE DIMORPHISM VARY WITH FEMALE LENGTH INFOREST MILLIPEDES *CENTROBOLUS COOK, 1897?*" *Universe Int. J. Interdiscip. Res.*, vol. 2, no. 12, pp. 1-7, 2022. <https://www.doi-ds.org/doi/10.2022-69939779/UIJIR>.
- 159.M. Cooper, "DOES SEXUAL SIZE DIMORPHISM VARY WITH PRECIPITATION IN FOREST MILLIPEDES *CENTROBOLUS COOK, 1897?*" *Munis Entomology and Zoology*, vol 17, no. 2, pp. 1185-1189, 2022.
- 160.M. I. Cooper, "Do copulation durations of sympatric red millipedes vary seasonally with mating frequencies?" *Int. J. Re. Res. Thesis Diss.*, vol. 3, no. 1, pp. 85-90, 2022. <https://doi.org/10.5281/zenodo.6613001>.
- 161.M. I. Cooper, "The inverse latitudinal gradients in species richness of Southern African millipedes," *Int. J. Re. Res. Thesis Diss.*, vol. 3, no. 1, pp. 91-112, 2022. <https://doi.org/10.5281/zenodo.6613064>.
- 162.M. I. Cooper, "DOES SEXUAL SIZE DIMORPHISM VARY WITH LOG SEXUAL SIZE DIMORPHISM IN RED MILLIPEDES *CENTROBOLUS COOK, 1897?*" *Universe Int. J. Interdiscip. Res.*, vol. 2, no. 12, pp. 52-54, 2022. <https://www.doi-ds.org/doi/10.2022-83544225/UIJIR>.
- 163.M. I. Cooper, "Do copulation duration and sexual size dimorphism vary with absolute abundance in red millipedes *Centrobolus Cook, 1897?*" *Acta Entomol. Zool.*, vol. 3, no. 1, pp. 51-54, 2022. <https://www.actajournal.com/archives/2022.v3.i1.A.64> <https://doi.org/10.33545/27080013.2022.v3.i1a.64>.
- 164.M. Cooper, "DOES SEXUAL SIZE DIMORPHISM VARY WITH FEMALE LENGTH INFOREST MILLIPEDES *CENTROBOLUS COOK, 1897?*" *Universe Int. J. Interdiscip. Res.*, vol. 2, no. 12, pp. 1-7, 2022. <https://www.doi-ds.org/doi/10.2022-69939779/UIJIR>.
- 165.M. Cooper, "DOES SEXUAL SIZE DIMORPHISM VARY WITH PRECIPITATION INFOREST MILLIPEDES *CENTROBOLUS COOK, 1897?*" *Munis Entomology and Zoology*, vol. 17, no. 2, pp. 1185-1189, 2022.
- 166.M. I. Cooper, "Do copulation durations of sympatric red millipedes vary seasonally with mating frequencies?" *Int. J. Re. Res. Thesis Diss.*, vol. 3, no. 1, pp. 85-90, 2022. <https://doi.org/10.5281/zenodo.6613001>.
- 167.M. I. Cooper, "The inverse latitudinal gradients in species richness of Southern African millipedes," *Int. J. Re. Res. Thesis Diss.*, vol. 3, no. 1, pp. 91-112, 2022. <https://doi.org/10.5281/zenodo.6613064>.
- 168.M. I. Cooper, "DOES SEXUAL SIZE DIMORPHISM VARY WITH LOG SEXUAL SIZE DIMORPHISM IN RED MILLIPEDES *CENTROBOLUS COOK, 1897?*" *Universe Int. J. Interdiscip. Res.*, vol. 2, no. 12, pp. 52-54, 2022. <https://www.doi-ds.org/doi/10.2022-83544225/UIJIR>.
- 169.M. Cooper, "THE TIE-IN OF MALE BODY WIDTH ON COPULATION DURATION IN *CENTROBOLUS COOK, 1897,*" *Universe Int. J. Interdiscip. Res.*, vol. 3, no. 1, pp. 45-47, 2022. <https://www.doi-ds.org/doi/10.2022-88932399/UIJIR>.
- 170.M. I. Cooper, "IS A PROMINENT STERNITE RELATED TO MOMENTS OF INERTIA IN *CENTROBOLUS COOK, 1897?*" *International Journal of Engineering Science Invention Research & Development*, vol. 8, no. 12, pp. 26-28, 2022. http://www.ijesird.com/1_june_22.PDF.
- 171.M. I. Cooper, "IS COPULATION DURATION RELATED TO MOMENTS OF INERTIA IN *CENTROBOLUS COOK, 1897?*" *International Journal of Engineering Science Invention Research & Development*, vol. 8, no. 12, pp. 29-31, 2022. http://www.ijesird.com/2_june_22.PDF.
- 172.M. I. Cooper, "COPULATION DURATION IS RELATED TO EJACULATING VOLUME IN *CENTROBOLUS INSCRIPTUS (ATTEMPS, 1928),*" *International Journal of Engineering Science Invention Research & Development*, vol. 8, no. 12, pp. 32-40, 2022. http://www.ijesird.com/3_june_22.PDF.
- 173.M. I. Cooper, "Is a prominent sternite related to mass in *Centrobolus Cook, 1897?*" *International Journal of Engineering Science Invention Research & Development*, vol. 9, no. 1, pp. 1-4, 2022. http://www.ijesird.com/1_jul_22.PDF.
- 174.M. I. Cooper, "Does sex ratio vary with absolute abundance in red millipedes *Centrobolus Cook, 1897?*" *International Journal of Engineering Science Invention Research & Development*, vol. 9, no. 1, pp. 5-8, 2022. http://www.ijesird.com/2_jul_22.PDF.
- 175.M. I. Cooper, "Does copulation duration vary with absolute abundance in red millipedes *Centrobolus Cook, 1897?*" *International Journal of Engineering Science Invention Research & Development*, vol. 9, no. 1, pp. 9-11, 2022. http://www.ijesird.com/3_jul_22.PDF.

- 176.M. I. Cooper, "Are a prominent sternite, coleopod spine length, and spine number related to mating frequencies in *Centrobolus Cook, 1897?*" International Journal of Engineering Science Invention Research & Development, vol. 9, no. 1, pp. 12-15, 2022. http://www.ijesird.com/4_jul_22.PDF.
- 177.M. I. Cooper, "Are coleopod spine length and number related to weather in *Centrobolus Cook, 1897?*" International Journal of Engineering Science Invention Research & Development, vol. 9, no. 1, pp. 16-23, 2022. http://www.ijesird.com/5_jul_22.PDF.
- 178.M. I. Cooper, "Are coleopod spine length and number related to mass in *Centrobolus Cook, 1897?*" International Journal of Engineering Science Invention Research & Development, vol. 9, no. 1, pp. 24-26, 2022. http://www.ijesird.com/6_jul_22.PDF.
- 179.M. I. Cooper, "Is mass related to latitude, longitude, and weather in *Centrobolus Cook, 1897?*" International Journal of Engineering Science Invention Research & Development, vol. 9, no. 1, pp. 27-32, 2022. https://www.ijesird.com/7_jul_22.PDF.
- 180.M. I. Cooper, "ARE MATING FREQUENCIES RELATED TO ABSOLUTE ABUNDANCE IN *CENTROBOLUS COOK, 1897?*" International Journal of Engineering Science Invention Research & Development, vol. 9, no. 1, pp. 33-37, 2022. https://www.ijesird.com/8_jul-22.PDF.
- 181.M. I. Cooper, "Does sex ratio vary with absolute abundance in red millipedes *Centrobolus Cook, 1897?*" International Journal of Engineering Science Invention Research & Development, vol. 9, no. 1, pp. 5-8, 2022. http://www.ijesird.com/2_jul_22.PDF.
- 182.M. I. Cooper, "Does copulation duration vary with absolute abundance in red millipedes *Centrobolus Cook, 1897?*" International Journal of Engineering Science Invention Research & Development, vol. 9, no. 1, pp. 9-11, 2022. http://www.ijesird.com/3_jul_22.PDF.
- 183.M. I. Cooper, "Are a prominent sternite, coleopod spine length, and spine number related to mating frequencies in *Centrobolus Cook, 1897?*" International Journal of Engineering Science Invention Research & Development, vol. 9, no. 1, pp. 12-15, 2022. http://www.ijesird.com/4_jul_22.PDF.
- 184.M. I. Cooper, "Are coleopod spine length and number related to weather in *Centrobolus Cook, 1897?*" International Journal of Engineering Science Invention Research & Development, vol. 9, no. 1, pp. 16-23, 2022. http://www.ijesird.com/5_jul_22.PDF.
- 185.M. I. Cooper, "Are coleopod spine length and number related to mass in *Centrobolus Cook, 1897?*" International Journal of Engineering Science Invention Research & Development, vol. 9, no. 1, pp. 24-26, 2022. http://www.ijesird.com/6_jul_22.PDF.
- 186.M. I. Cooper, "Is mass related to latitude, longitude, and weather in *Centrobolus Cook, 1897?*" International Journal of Engineering Science Invention Research & Development, vol. 9, no. 1, pp. 27-32, 2022. https://www.ijesird.com/7_jul_22.PDF.
- 187.M. I. Cooper, "ARE MATING FREQUENCIES RELATED TO ABSOLUTE ABUNDANCE IN *CENTROBOLUS COOK, 1897?*" International Journal of Engineering Science Invention Research & Development, vol. 9, no. 1, pp. 33-37, 2022. https://www.ijesird.com/8_jul-22.PDF.
- 188.M. I. Cooper, "DOES COPULATION DURATION VARY WITH SEX RATIO IN THE RED MILLIPEDE *CENTROBOLUS INSCRIPTUS (ATTEMPS, 1928)?*" International Journal of Engineering Science Invention Research & Development, vol. 9, no. 1, pp. 38-40, 2022. https://www.ijesird.com/9_jul_22.PDF.
- 189.M. I. Cooper, "IS A PROMINENT STERNITE RELATED TO WEATHER IN *CENTROBOLUS COOK, 1897?*" International Journal of Engineering Science Invention Research & Development, vol. 9, no. 1, pp. 41-44, 2022. https://www.ijesird.com/10_jul_22.PDF.
- 190.M. I. Cooper, "ARE MATING FREQUENCIES RELATED TO SEX RATIO IN *CENTROBOLUS COOK, 1897?*" International Journal of Engineering Science Invention Research & Development, vol. 9, no. 1, pp. 45-48, 2022. https://www.ijesird.com/11_jul_22.PDF.
- 191.M. I. Cooper, "ARE MATING FREQUENCIES RELATED TO SEXUAL SIZE DIMORPHISM IN *CENTROBOLUS COOK, 1897?*" International Journal of Engineering Science Invention Research & Development, vol. 9, no. 1, pp. 49-51, 2022. https://www.ijesird.com/12_jul_22.PDF.
- 192.M. Cooper, "ARE MATING FREQUENCIES RELATED TO MOMENTS OF INERTIA ACROSS THE SEXES IN *CENTROBOLUS COOK, 1897?*" International Journal of Engineering Science Invention Research & Development, vol. 9, no. 1, pp. 52-55, 2022. https://www.ijesird.com/13_jul_22.PDF.
- 193.M. I. Cooper, "ARE MATING FREQUENCIES RELATED TO TARSAL PAD LENGTH IN *CENTROBOLUS COOK, 1897?*" International Journal of Engineering Science Invention Research & Development, vol. 9, no. 2, pp. 1-4, 2022. https://www.ijesird.com/1_aug_22.PDF.
- 194.M. Cooper, "IS COPULATION DURATION RELATED TO TARSAL PAD LENGTH IN *CENTROBOLUS COOK, 1897?*" International Journal of Engineering Science Invention Research & Development, vol. 9, no. 2, pp. 65-67, 2022. https://www.ijesird.com/3_aug_22.PDF.
- 195.M. Cooper, "ARE ABSOLUTE ABUNDANCES RELATED TO TARSAL PAD LENGTH IN *CENTROBOLUS COOK, 1897?*" International Journal of Engineering Science Invention Research

- &Development, vol. 9, no. 2, pp. 68-70, 2022. https://www.ijesird.com/4_aug_22.PDF.
- 196.M. I. Cooper, "ARE MATING FREQUENCIES RELATED TO MALE AND FEMALE SIZE IN CENTROBOLUS COOK, 1897?" International Journal of Engineering Science Invention Research & Development, vol. 9, no. 2, pp. 71-76, 2022. https://www.ijesird.com/5_aug_22.PDF.
- 197.M. Cooper, "DOES EJACULATE VOLUME VARY WITH ABSOLUTE ABUNDANCE IN RED MILLIPEDES CENTROBOLUS COOK, 1897?" International Journal of Engineering Science Invention Research & Development, vol. 9, no. 2, pp. 77-79, 2022. https://www.ijesird.com/6_aug_22.PDF.
- 198.M. I. Cooper, "THE MOMENTS OF INERTIA TIE-UP WITH FEMALE SIZE, HOURS OF SUNSHINE THROUGHOUT THE YEAR, LATITUDE, LONGITUDE, AND MINIMUM TEMPERATURE IN RED MILLIPEDES CENTROBOLUS COOK, 1897," Universe Int. J. Interdiscip. Res., vol. 3, no. 2, pp. 6-12, 2022. <https://www.doi-ds.org/doi/10.2022-76913842/UIJIR>.
- 199.M. I. COOPER, "ARE MATING FREQUENCIES RELATED TO EJACULATE VOLUMES IN CENTROBOLUS COOK, 1897?" International Journal of Engineering Science Invention Research & Development, vol. 9, no. 3, pp. 93-95, 2022. https://www.ijesird.com/aug_ten.PDF.
- 200.M. Cooper, "DOES SEXUAL SIZE DIMORPHISM VARY WITH FEMALE WIDTH IN FOREST MILLIPEDES CENTROBOLUS COOK, 1897?" Munis Entomol. Zool., vol. 17(supplement), pp. 1562-1565, 2022.
- 201.M. Cooper, "DOES SEXUAL SIZE DIMORPHISM VARY WITH THE HIGHEST TOTAL HOURS OF SUNSHINE IN A MONTH IN FOREST MILLIPEDES CENTROBOLUS COOK, 1897?" Munis Entomol. Zool., vol. 17(supplement), pp. 1596-1602, 2022.
- 202.M. Cooper, "DOES SEXUAL SIZE DIMORPHISM VARY WITH BODY MASS IN FOREST MILLIPEDES CENTROBOLUS COOK, 1897?" Munis Entomol. Zool. Suppl., vol. 17(supplement), pp. 1621-1624, 2022.
- 203.M. COOPER, "IS SIZE OR SSD RELATED TO ABUNDANCE IN CENTROBOLUS COOK,1897?" International Journal of Engineering Science Invention Research & Development., vol. 9, no. 3, pp. 96-102, 2022. https://www.ijesird.com/sep_one.PDF.
- 204.M. I. COOPER, "IS A PROMINENT STERNITE RELATED TO SEX RATIOS AND ABUNDANCE IN CENTROBOLUS COOK, 1897?" International Journal of Engineering Science Invention Research & Development, vol. 9, no. 3, pp. 103-106, 2022. https://www.ijesird.com/sep_two_6.PDF.
- 205.M. I. Cooper, "DOES SEXUAL SIZE DIMORPHISM VARY WITH FEWEST DAILY HOURS OF SUNSHINE IN RED MILLIPEDES CENTROBOLUS COOK, 1897?" Universe Int. J. Interdiscip. Res., vol. 3, no. 3, pp. 89-92, 2022. <https://www.doi-ds.org/doi/10.2022-94655978/UIJIR>.
- 206.M. COOPER, "DOES (PREDICTED) MASS CORRELATE WITH MATING FREQUENCIES IN CENTROBOLUS COOK, 1897?" Universe Int. J. Interdiscip. Res., vol. 3, no. 4, pp. 141-19.
- 207.M. I. COOPER, "IS MASS CORRELATED WITH LENGTH AMONG RED MILLIPEDES CENTROBOLUS COOK, 1897?" Universe Int. J. Interdiscip. Res., vol. 3, no. 5, pp. 190-196, 2022. <https://www.doids.org/doi/10.2022-82684698/UIJIR>. <https://uijir.com/wp-content/uploads/2022/11/20-221012-UIJIR.pdf>.
- 208.M. I. Cooper, "ABUNDANCE IS RELATED TO SURFACE AREA AND SURFACE-AREA-TO-VOLUME RATIOS IN CENTROBOLUS COOK, 1897," Universe Int. J. Interdiscip. Res., vol. 3, no. 5, pp. 231-240, 2022. <https://www.doi-ds.org/doi/10.2022-99614928/UIJIR>. <http://hdl.handle.net/10019.1/125794>.
- 209.M. I. COOPER, "ARE SURFACE AREA AND SURFACE-AREA-TO-VOLUME RATIO RELATED TO SEX RATIOS IN CENTROBOLUS COOK, 1897?" International Journal of Engineering Science Invention Research & Development, vol. 9, no. 5, pp. 140-145, 2022. http://ijesird.com/nov_1.PDF.
- 210.M. I. COOPER, "ARE SURFACE AREA AND SURFACE-AREA-TO-VOLUME RATIO RELATED TO COPULATION DURATION IN CENTROBOLUS COOK, 1897?" International Journal of Engineering Science Invention Research & Development, vol. 9, no. 4, pp. 146-151, 2022. http://ijesird.com/nov_2.PDF.
- 211.M. I. Cooper, "DOES EJACULATE VOLUME VARY WITH SURFACE AREA AND SURFACE AREA TO VOLUME RATIO IN CENTROBOLUS COOK, 1897?" International Journal of Engineering Science Invention Research & Development, vol. 9, no. 5, pp. 152-154, 2022. http://ijesird.com/nov_3.PDF. <http://hdl.handle.net/10019.1/125795>.
- 212.M. I. COOPER, "MATING FREQUENCY IS RELATED TO SURFACE AREA AND SURFACE-AREA-TO VOLUME RATIOS IN CENTROBOLUS COOK, 1897," International Journal of Engineering Science Invention Research & Development, vol. 9, no. 5, pp. 155-161, 2022. http://ijesird.com/nov_4.PDF. <http://hdl.handle.net/10019.1/125795>.
- 213.M. I. COOPER, "ARE SURFACE AREA AND SURFACE-AREA-TO-VOLUME RATIO RELATED TO LATITUDE AND LONGITUDE IN CENTROBOLUS COOK, 1897?" International

- Journal of Engineering Science Invention Research & Development, vol. 9, no. 5, pp. 162-167, 2022. http://ijesird.com/nov_5.PDF.
- 214.M. I. COOPER, "MOMENTS OF INERTIA COVARY WITH SURFACE AREA IN FOREST RED MILLIPEDES CENTROBOLUS COOK, 1897," International Journal of Engineering Science Invention Research & Development, vol. 9, no. 5, pp. 168-173, 2022. http://ijesird.com/nov_6.PDF.
- 215.M. Cooper, "TARSAL PAD LENGTHS ARE RELATED TO SURFACE-AREA-TO-VOLUME RATIOS IN CENTROBOLUS COOK, 1897," Universe Int. J. Interdiscip. Res., vol. 3, no. 6, pp. 27-33, 2022.
- 216.M. I. Cooper, "SURFACE-AREA-TO-VOLUME IS RELATED TO SEXUAL SIZE DIMORPHISM ACROSS CENTROBOLUS COOK, 1897," Universe Int. J. Interdiscip. Res., vol. 3, no. 6, pp. 34-42, 2022.
- 217.M. Cooper, "SEX RATIO VARIES WITH AVERAGE TEMPERATURE IN RED MILLIPEDES CENTROBOLUS COOK, 1897," International Journal of Engineering Science Invention Research & Development, vol. 9, no. 6, pp. 174-178, 2022. <http://ijesird.com/DEC1.PDF>.
- 218.M. Cooper, "SEX RATIO VARIES WITH MINIMUM TEMPERATURE IN RED MILLIPEDES CENTROBOLUS COOK, 1897," International Journal of Engineering Science Invention Research & Development, vol. 9, no. 6, pp. 179-183, 2022. <http://ijesird.com/DEC2.PDF>.
- 219.M. Cooper, "SEX RATIO VARIES WITH MAXIMUM TEMPERATURE IN RED MILLIPEDES CENTROBOLUS COOK, 1897," International Journal of Engineering Science Invention Research & Development, vol. 9, no. 6, pp. 184-188, 2022. <http://ijesird.com/DEC3.PDF>.
- 220.M. Cooper, "SEX RATIO VARIES WITH PRECIPITATION IN RED MILLIPEDES CENTROBOLUS COOK, 1897," International Journal of Engineering Science Invention Research & Development, vol. 9, no. 6, pp. 189-193, 2022. <http://ijesird.com/DEC4.PDF>.
- 221.M. Cooper, "SEX RATIO VARIES WITH HUMIDITY IN RED MILLIPEDES CENTROBOLUS COOK, 1897," International Journal of Engineering Science Invention Research & Development, vol. 9, no. 6, pp. 194-198, 2022. <http://ijesird.com/DEC5.PDF>.
- 222.M. Cooper, "SEX RATIO VARIES WITH RAINY DAYS IN RED MILLIPEDES CENTROBOLUS COOK, 1897," International Journal of Engineering Science Invention Research & Development, vol. 9, no. 6, pp. 199-203, 2022. <http://ijesird.com/DEC6.PDF>.
- 223.M. Cooper, "SEX RATIO VARIES WITH AVERAGE SUN HOURS IN RED MILLIPEDES CENTROBOLUS COOK, 1897," International Journal of Engineering Science Invention Research & Development, vol. 9, no. 6, pp. 204-207, 2022. <http://ijesird.com/DEC7.PDF>.
- 224.M. I. Cooper, "VOLUME IS RELATED TO SURFACE-AREA-TO-VOLUME ACROSS CENTROBOLUS COOK, 1897," Universe Int. J. Interdiscip. Res., vol. 3, no. 6, pp. 83-91, 2022.
- 225.M. L. Hamer, "Checklist of Southern African millipedes(Myriapoda: Diplopoda)," Annals of the Natal Museum, vol. 39, no. 1, pp. 11-82, 1998.
- 226.R. F. Lawrence, "The Spiroboleida (Diplopoda) of the eastern half of Southern Africa*," Annals of the Natal Museum, vol. 18, no. 3, pp. 607-646, 1967.
- 227.R. P. Mailula, "Taxonomic revision and Red List assessment of the red millipede genus *Centrobolus* (Spirobolida: Pachybolidae) of South Africa," The University of Kwazulu Natal, pp. 289, 2021.
- 228.COOPER, MARK IAN. THE SURFACE AREA IS RELATED TO MATING FREQUENCIES ACROSS SYMPATRIC *CENTROBOLUS ANULATUS* (ATTEMS, 1934) AND *C. INSCRIPTUS* (ATTEMS, 1928). Universe Int. J. Interdiscip. Res. 2022; 3(7): 11-20. <http://www.doi-ds.org/doi/10.2022-39677929/UIJIR>.
- 229.Cooper Mark I. 2023. PRECIPITATION DURING THE DRIEST MONTH IS marginally RELATED TO LONGITUDE ACROSS THE DISTRIBUTION OF RED MILLIPEDES CENTROBOLUS COOK, 1897. *Munis Entomology & Zoology*, 18(1): 339-341. http://www.munisentzool.org/Issue/abstract/precipitation-during-the-driest-month-is-marginally-related-to-longitude-across-the-distribution-of-red-millipedes-centrobolus-cook-1897_13915.
- 230.Cooper Mark I. 2023. DOES SEXUAL SIZE DIMORPHISM VARY WITH THE FEWEST DAILY HOURS OF SUNSHINE IN RED MILLIPEDES CENTROBOLUS COOK, 1897? *Munis Entomology & Zoology*, 18(1): 373-375. http://www.munisentzool.org/Issue/abstract/does-sexual-size-dimorphism-vary-with-the-fewest-daily-hours-of-sunshine-in-red-millipedes-centrobolus-cook-1897_13918.
- 231.Cooper Mark I. 2023. THE HIGHEST DAILY HOURS OF SUNSHINE ARE RELATED TO LONGITUDE ACROSS THE DISTRIBUTION OF PILL MILLIPEDES SPHAEROTHERIUM BRANDT, 1833. *Munis Entomology & Zoology*, 18(1): 385-387. http://www.munisentzool.org/Issue/abstract/the-highest-daily-hours-of-sunshine-are-related-to-longitude-across-the-distribution-of-pill-millipedes-sphaerotherium-brandt-1833_13920. <http://hdl.handle.net/10019.1/125806>.
- 232.Cooper Mark I. 2023. IS MASS CORRELATED WITH LENGTH AMONG RED MILLIPEDES CENTROBOLUS COOK, 1897? *Munis Entomology &*

- Zoology, 18(1): 404-408.
http://www.munisentzool.org/Issue/abstract/is-mass-correlated-with-length-among-red-millipedes-centrobolus-cook-1897_13922.
<http://hdl.handle.net/10019.1/125806>.
233. Cooper, Mark I. 2023. QUASIPROBABLE SOLUTION OF RAINY DAY VARIATIONS FOR SET MATING FREQUENCIES AND MALE AND FEMALE LENGTHS IN *CENTROBOLUS COOK*, 1897. *Munis Entomology & Zoology*, 18(1): 620-624.
http://www.munisentzool.org/Issue/abstract/quasiprobable-solution-of-rainy-day-variations-for-set-mating-frequencies-and-male-and-female-lengths-in-centrobolus-cook-1897_13947.
234. Cooper, Mark I. 2023. SECOND POLAR MOMENTS OF AREA IN MALE AND FEMALE *CENTROBOLUS COOK*, 1897. *Munis Entomology & Zoology*, 18(1): 643-646.
http://www.munisentzool.org/Issue/abstract/second-polar-moments-of-area-in-male-and-female-centrobolus-cook-1897_13951.
235. Cooper M. SECOND POLAR MOMENTS OF INERTNESS WITH TEMPERATURE IN FOREST RED MILLIPEDES *CENTROBOLUS COOK*, 1897. *Universe Int. J. Interdiscip. Res.* 2023; 3(8): 11-32.
<http://www.doi-ds.org/doi/10.2023-86516136/UIJIR>.
236. Cooper, Mark I. CURVED SURFACE AREAS IN *CENTROBOLUS COOK*, 1897. *Universe Int. J. Interdiscip. Res.* 2023; 3(8): 81-116. <http://www.doi-ds.org/doi/10.2023-92114597/UIJIR>.
237. Cooper, Mark I. SEXUAL SIZE DIMORPHISM MAY BE RELATED TO SEX RATIOS IN *CENTROBOLUS COOK*, 1897. *International Journal of Engineering Science Invention Research & Development.* 2023; 9(8): 252-257.
http://www.ijesird.com/FAB_1_23.PDF.
238. COOPER, MARK. ABUNDANCE VARIES WITH MINIMUM TEMPERATURE IN RED MILLIPEDES *CENTROBOLUS COOK*, 1897. *International Journal of Engineering Science Invention Research & Development.* 2023; 9(8): 258-262.
http://www.ijesird.com/Fab_2_23.PDF.
239. COOPER, MARK. MATING FREQUENCIES VARY WITH RAINY DAYS IN RED MILLIPEDES *CENTROBOLUS COOK*, 1897. *International Journal of Engineering Science Invention Research & Development.* 2023; 9(8): 263-270.
http://www.ijesird.com/Fab_3_23.PDF.
240. COOPER, MARK. THE INVERSE LATITUDINAL GRADIENT IN SPECIES RICHNESS OF FOREST MILLIPEDES: *PACHYBOLIDAE COOK*, 1897. *International Journal of Scientific Research, Technology & Innovation in Multidisciplinary Studies.* 9th April 2023. Volume 4, pp. 80-89.
241. COOPER, MARK. AN INVERSE LATITUDINAL GRADIENT IN SPECIES RICHNESS OF FOREST RED MILLIPEDES *CHERSASTUS ATTEMPS*, 1926 AND *CENTROBOLUS COOK*, 1897. *International Journal of Engineering Science Invention Research & Development.* 2023; 10(2): 5-23.
http://www.ijesird.com/aug_2023_1.pdf
242. Cooper M. (FEMALE) SECOND POLAR MOMENTS OF INERTNESS ARE RELATED TO SEXUAL SIZE DIMORPHISM IN FOREST RED MILLIPEDES *CENTROBOLUS COOK*, 1897. *International Journal of Engineering Science Invention Research & Development.* 2023; 10(2): 24-36.
http://www.ijesird.com/aug_2023_2.pdf
243. Cooper M. SURFACE AREA IS RELATED TO TEMPERATURE IN FOREST RED MILLIPEDES *CENTROBOLUS COOK*, 1897. *International Journal of Engineering Science Invention Research & Development.* 2023; 10(2): 37-53.
http://www.ijesird.com/aug_2023_3.pdf
244. Cooper M. SECOND POLAR MOMENTS OF INERTNESS ARE RELATED TO MOMENTS OF INERTIA IN FOREST RED MILLIPEDES *CENTROBOLUS COOK*, 1897. *International Journal of Engineering Science Invention Research & Development.* 2023; 10(2): 54-65.
http://www.ijesird.com/aug_2023_4.pdf.
245. Cooper M. SECOND POLAR MOMENTS OF INERTNESS ARE RELATED TO (MALE) MASS IN FOREST RED MILLIPEDES *CENTROBOLUS COOK*, 1897. *International Journal of Engineering Science Invention Research & Development.* 2023; 10(2): 66-76. http://www.ijesird.com/aug_2023_5.pdf.
246. Cooper M. MALE SECOND POLAR MOMENTS OF INERTNESS ARE RELATED TO COPULATION DURATION IN FOREST RED MILLIPEDES *CENTROBOLUS COOK*, 1897. *International Journal of Engineering Science Invention Research & Development.* 2023; 10(2): 77-88.
http://www.ijesird.com/aug_2023_6.pdf.
247. Cooper M. MALE SECOND POLAR MOMENTS OF INERTNESS ARE RELATED TO ABUNDANCE IN FOREST RED MILLIPEDES *CENTROBOLUS COOK*, 1897. *International Journal of Engineering Science Invention Research & Development.* 2023; 10(2): 89-99. http://www.ijesird.com/aug_2023_7.pdf.
248. Cooper Mark. SECOND POLAR MOMENTS OF INERTNESS ARE RELATED TO MINIMUM OCEAN WATER TEMPERATURES IN COASTAL FOREST RED MILLIPEDES *CENTROBOLUS COOK*, 1897. *International Journal of Engineering Science Invention Research & Development.* 2023; 10(3): 266-282.
249. Cooper Mark. SURFACE AREA-TO-VOLUME RATIO ARE RELATED TO SECOND POLAR

- MOMENTS OF INERTNESS IN *CENTROBOLUS* COOK, 1897. International Journal of Engineering Science Invention Research & Development. 2023; 10(3): 249-265.
250. Cooper Mark. SECOND POLAR MOMENTS OF INERTNESS ARE RELATED TO HIGHEST TOTAL HOURS OF SUNSHINE IN A MONTH IN FOREST RED MILLIPEDES *CENTROBOLUS* COOK, 1897. International Journal of Engineering Science Invention Research & Development. 2023; 10(3): 231-248.
251. Cooper Mark. SECOND POLAR MOMENTS OF INERTNESS ARE RELATED TO MEAN OCEAN WATER TEMPERATURES IN COASTAL FOREST RED MILLIPEDES *CENTROBOLUS* COOK, 1897. International Journal of Engineering Science Invention Research & Development. 2023; 10(3): 214-230. https://ijesird.com/sep8_23.pdf.
252. Cooper Mark. STERNITE PROMINENCE IS RELATED TO SECOND POLAR MOMENTS OF INERTNESS IN *CENTROBOLUS* COOK, 1897. International Journal of Engineering Science Invention Research & Development. 2023; 10(3): 198-213.
253. Cooper Mark. SECOND POLAR MOMENTS OF INERTNESS ARE RELATED TO LENGTH IN FOREST RED MILLIPEDES *CENTROBOLUS* COOK, 1897. International Journal of Engineering Science Invention Research & Development. 2023; 10(3): 181-197.
254. Cooper Mark. SECOND POLAR MOMENTS OF INERTNESS ARE RELATED TO WIDTH IN FOREST RED MILLIPEDES *CENTROBOLUS* COOK, 1897. International Journal of Engineering Science Invention Research & Development. 2023; 10(3): 164-180.
255. Cooper Mark. SECOND POLAR MOMENTS OF INERTNESS ARE RELATED TO MINIMUM PRECIPITATION IN FOREST RED MILLIPEDES *CENTROBOLUS* COOK, 1897. International Journal of Engineering Science Invention Research & Development. 2023; 10(3): 147-163. http://www.ijesird.com/sep4_23.pdf.
256. Cooper Mark. CURVED SURFACE AREA IS RELATED TO SECOND POLAR MOMENTS OF INERTIA IN FOREST RED MILLIPEDES *CENTROBOLUS* COOK, 1897. International Journal of Engineering Science Invention Research & Development. 2023; 10(3): 130-146.
257. Cooper Mark. SECOND POLAR MOMENTS OF INERTNESS ARE RELATED TO MINIMUM TEMPERATURE IN FOREST RED MILLIPEDES *CENTROBOLUS* COOK, 1897. International Journal of Engineering Science Invention Research & Development. 2023; 10(3): 129-145. http://www.ijesird.com/sep2_23.pdf.
258. Cooper Mark. SECOND POLAR MOMENTS OF INERTNESS ARE RELATED TO SPECIES RICHNESS IN FOREST RED MILLIPEDES *CENTROBOLUS* COOK, 1897. International Journal of Engineering Science Invention Research & Development. 2023; 10(3): 113-128.
259. COOPER, MARK. THE INVERSE LATITUDINAL GRADIENT IN SPECIES RICHNESS OF FOREST MILLIPEDES: PACHYBOLIDAE COOK, 1897. International Journal of Scientific Research, Technology & Innovation in Multidisciplinary Studies. 9th April 2023. Volume 4, pp. 80-89.
- 260.1 Cooper, Mark I. CURVED SURFACE AREAS IN *CENTROBOLUS* COOK, 1897. Universe Int. J. Interdiscip. Res. 2023; 3(8): 81-116. <http://www.doi-ds.org/doi/10.2023-92114597/UIJIR>.
261. Cooper M. SECOND POLAR MOMENTS OF INERTNESS WITH TEMPERATURE IN FOREST RED MILLIPEDES *CENTROBOLUS* COOK, 1897. Universe Int. J. Interdiscip. Res. 2023; 3(8): 11-32. <http://www.doi-ds.org/doi/10.2023-86516136/UIJIR>.
262. Cooper M. CURVED SURFACE AREA IS RELATED TO SPECIES RICHNESS IN FOREST RED MILLIPEDES *CENTROBOLUS* COOK, 1897. International Journal of Engineering Science Invention Research & Development. 2023; 10(4): 330-348. http://www.ijesird.com/oct1_23.pdf.
263. Cooper M. SPECIES RICHNESS IS RELATED TO PRECIPITATION IN FOREST RED MILLIPEDES *CENTROBOLUS* COOK, 1897. International Journal of Engineering Science Invention Research & Development. 2023; 10(4): 349-367. http://www.ijesird.com/oct2_23.pdf.
264. Cooper M. SPECIES RICHNESS IS RELATED TO MINIMUM OCEAN WATER TEMPERATURE IN COASTAL FOREST RED MILLIPEDES *CENTROBOLUS* COOK, 1897. International Journal of Engineering Science Invention Research & Development. 2023; 10(4): 368-385. http://www.ijesird.com/oct3_23.pdf.
265. Cooper M. SPECIES RICHNESS IS RELATED TO MEAN OCEAN WATER TEMPERATURE NEAR

- FOREST RED MILLIPEDES *CENTROBOLUS COOK*, 1897. International Journal of Engineering Science Invention Research & Development. 2023; 10(4): 386-402. http://www.ijesird.com/oct4_23.pdf.
266. Cooper M. SPECIES RICHNESS IS RELATED TO MAXIMUM TEMPERATURE IN FOREST RED MILLIPEDES *CENTROBOLUS COOK*, 1897. International Journal of Engineering Science Invention Research & Development. 2023; 10(4): 403-420. http://www.ijesird.com/oct5_23.pdf.
267. Cooper M. SPECIES RICHNESS IS RELATED TO LOWEST RELATIVE HUMIDITY IN FOREST RED MILLIPEDES *CENTROBOLUS COOK*, 1897. International Journal of Engineering Science Invention Research & Development. 2023; 10(4): 421-438. http://www.ijesird.com/oct6_23.pdf.
268. Cooper M. SPECIES RICHNESS IS RELATED TO HIGHEST OCEAN WATER TEMPERATURES IN COASTAL FOREST RED MILLIPEDES *CENTROBOLUS COOK*, 1897. International Journal of Engineering Science Invention Research & Development. 2023; 10(4): 439-455. http://www.ijesird.com/oct7_23.pdf.
269. Cooper M. SPECIES RICHNESS IS RELATED TO ALTITUDE IN FOREST RED MILLIPEDES *CENTROBOLUS COOK*, 1897. International Journal of Engineering Science Invention Research & Development. 2023; 10(4): 456-472. http://www.ijesird.com/oct8_23.pdf.
270. Cooper M. SPECIES RICHNESS IS MARGINALLY RELATED TO LENGTH IN FOREST RED MILLIPEDES *CENTROBOLUS COOK*, 1897. International Journal of Engineering Science Invention Research & Development. 2023; 10(4): 473-490. http://www.ijesird.com/oct9_23.pdf.
271. Cooper M. SURFACE AREA-TO-VOLUME RATIO IS RELATED TO SPECIES RICHNESS IN *CENTROBOLUS COOK*, 1897. International Journal of Engineering Science Invention Research & Development. 2023; 10(4): 491-508. http://www.ijesird.com/oct10_23.pdf.
272. Cooper M. SECOND POLAR MOMENTS OF INERTNESS ARE RELATED TO AVERAGE TEMPERATURE VARIATION IN FOREST RED MILLIPEDES *CENTROBOLUS COOK*, 1897. International Journal of Engineering Science Invention Research & Development. 2023; 10(4): 515-534. http://www.ijesird.com/oct_12_23.pdf.
273. Cooper M. MALE SECOND POLAR MOMENTS OF INERTNESS ARE RELATED TO ALTITUDE IN FOREST RED MILLIPEDES *CENTROBOLUS COOK*, 1897. International Journal of Engineering Science Invention Research & Development. 2023; 10(4): 535-553. http://www.ijesird.com/oct_13_23.pdf.
274. Cooper M. SEXUAL SIZE DIMORPHISM IS CORRELATED TO MEAN OCEAN WATER TEMPERATURE IN FOREST RED MILLIPEDES *CENTROBOLUS COOK*, 1897. International Journal of Engineering Science Invention Research & Development. 2023; 10(4): 554-572. http://www.ijesird.com/oct_14_23.pdf.
275. Cooper M. SECOND POLAR MOMENTS OF INERTNESS ARE DIFFERENT IN AND BETWEEN TWO PAIRS OF FOREST RED MILLIPEDES *CENTROBOLUS COOK*, 1897. International Journal of Engineering Science Invention Research & Development. 2023; 10(5): 573-592. http://www.ijesird.com/nov_1_23.pdf.
276. Cooper M. SECOND POLAR MOMENTS OF INERTNESS ARE RELATED TO MATING FREQUENCIES, SPECIES VOLUME AND SURFACE AREA IN FOREST RED MILLIPEDES *CENTROBOLUS COOK*, 1897. International Journal of Engineering Science Invention Research & Development. 2023; 10(5): 593-620. http://www.ijesird.com/nov_2_23.pdf.
277. Cooper M. HIGHEST DURATION OF SUNSHINE IS RELATED TO MALE SECOND POLAR MOMENTS OF INERTNESS IN FOREST RED MILLIPEDES *CENTROBOLUS COOK*, 1897. International Journal of Engineering Science Invention Research & Development. 2023; 10(5): 621-641. http://www.ijesird.com/nov_3_23.pdf.
278. Cooper M. I. MATING FREQUENCY MAY BE RELATED TO AT LEAST SIXTEEN FACTORS IN FOREST RED MILLIPEDES *CENTROBOLUS COOK*, 1897. International Journal of Engineering Science Invention Research & Development. 2023; 10(5): 646-672. http://www.ijesird.com/nov_5_23.pdf.
279. Cooper M. SEXUAL SIZE DIMORPHISM IS CORRELATED TO MAXIMUM PRECIPITATION IN FOREST RED MILLIPEDES *CENTROBOLUS COOK*, 1897. International Journal of Engineering Science Invention Research & Development. 2023; 10(5): 673-699. http://www.ijesird.com/nov_6_23.pdf.
280. Cooper M. AVERAGE TEMPERATURE, MINIMUM TEMPERATURE, MAXIMUM TEMPERATURE, PRECIPITATION, HUMIDITY, RAINY DAYS, AND AVERAGE SUN HOURS ACROSS THE DISTRIBUTION OF *CENTROBOLUS* IN SOUTHERN AFRICA. International Journal of Engineering Science Invention Research & Development. 2023; 10(5): 700-726. http://www.ijesird.com/nov_7_23.pdf.
281. COOPER M. LENGTH IS RELATED TO AT LEAST THIRTEEN FACTORS IN FOREST RED MILLIPEDES *CENTROBOLUS COOK*, 1897. International Journal of Engineering Science

- Invention Research & Development. 2023; 10(5): 727-758. http://www.ijesird.com/nov_8_23.pdf.
282. COOPER M. I. WIDTH IS RELATED TO AT LEAST ELEVEN FACTORS IN FOREST RED MILLIPEDES *CENTROBOLUS COOK*, 1897. International Journal of Engineering Science Invention Research & Development. 2023; 10(5): 759-791. http://www.ijesird.com/nov_9_23.pdf.
283. COOPER M. I. SURFACE AREA IS RELATED TO AT LEAST TEN FACTORS IN FOREST RED MILLIPEDES *CENTROBOLUS COOK*, 1897. International Journal of Engineering Science Invention Research & Development. 2023; 10(5): 792-819. http://www.ijesird.com/nov_10_23.pdf.
284. Cooper, M. I. AIR PRESSURE IS NOT RELATED TO SPECIES RICHNESS IN *SPHAEROTHERIIDAE BRANDT*, 1833. Int. j. eng. sci. invention res. dev. 2024; 10(7).
285. Cooper, M. AIR PRESSURE IS RELATED TO SPECIES RICHNESS IN FOREST RED MILLIPEDES *CENTROBOLUS COOK*, 1897. Int. j. eng. sci. invention res. dev. 2023; 10(6): 1510-1534.
286. COOPER M. I. ABUNDANCE IS RELATED TO AT LEAST SEVEN FACTORS IN FOREST RED MILLIPEDES *CENTROBOLUS COOK*, 1897. Int. j. eng. sci. invention res. dev. 2023; 10(6): 1088-1103.
287. Cooper M. VOLUMES AND CURVED SURFACE AREAS ARE DIFFERENT BETWEEN THE SEXES OF A PAIR OF SYMPATRIC FOREST RED MILLIPEDES *CENTROBOLUS COOK*, 1897. Int. j. eng. sci. invention res. dev. 2023; 10(6): 1074-1087.
288. Cooper M. FACTORS RELATED TO TEMPERATURE IN FOREST RED MILLIPEDES *CENTROBOLUS COOK*, 1897. Int. j. eng. sci. invention res. dev. 2023; 10(6): 1039-1073.
289. COOPER M. I. PROBABLE SOLUTION OF RAINY DAY VARIATIONS FOR SET MATING FREQUENCIES AND MALE AND FEMALE WIDTHS IN *CENTROBOLUS COOK*, 1897. Int. j. eng. sci. invention res. dev. 2023; 10(6): 1026-1038.
290. Cooper, M. SURFACE AREA IS NOT RELATED TO MONTH WITH THE HIGHEST NUMBER OF RAINY DAYS, PRECIPITATION OR MAXIMUM TEMPERATURE IN FOREST RED MILLIPEDES *CENTROBOLUS COOK*, 1897. Int. j. eng. sci. invention res. dev. 2023; 10(6): 1008-1025.
291. Cooper M. I. COPULATION DURATION IS RELATED TO AT LEAST EIGHT FACTORS IN FOREST RED MILLIPEDES *CENTROBOLUS COOK*, 1897. Int. j. eng. sci. invention res. dev. 2023; 10(6): 993-1007.
292. Cooper, M. CORRECTION: FEMALE SECOND POLAR MOMENTS OF INERTNESS ARE RELATED TO MAXIMUM PRECIPITATION IN FOREST RED MILLIPEDES *CENTROBOLUS COOK*, 1897. Int. j. eng. sci. invention res. dev. 10 (IN PRESS).
293. Cooper, M. AIR PRESSURE IS NOT RELATED TO SPECIES RICHNESS IN *PILL MILLIPEDES SPHAEROTHERIUM BRANDT*, 1833. Int. j. eng. sci. invention res. dev. 10(6): 1553-1556.
294. Cooper, M. HIGH AIR PRESSURE IS RELATED TO LOW SPECIES RICHNESS IN *GNOMESKELUS ATTEMPS*, 1926. Int. j. eng. sci. invention res. dev. 10(6): 1548-1551.
295. Cooper, M. I. AIR PRESSURE IS (INVERSELY) RELATED TO SPECIES RICHNESS IN *DALODESMIDAE COOK*, 1896A. Int. j. eng. sci. invention res. dev. 10(6): 1543-1547.
296. Cooper, M. NO AIR PRESSURE-SPECIES RICHNESS RELATIONSHIP IN *JULOMORPHIDAE VERHOEFF*, 1924. Int. j. eng. sci. invention res. dev. 10 (6): 1540-1542.
297. COOPER M. CURVED SURFACE AREA IS RELATED TO AT LEAST TWENTY FACTORS IN FOREST RED MILLIPEDES *CENTROBOLUS COOK*, 1897. Int. j. eng. sci. invention res. dev. 2023; 10(6): 1438-1509.
298. Cooper M. VOLUME IS RELATED TO OCEAN WATER TEMPERATURES IN COASTAL FOREST RED MILLIPEDES *CENTROBOLUS COOK*, 1897. Int. j. eng. sci. invention res. dev. 2023; 10(6): 1410-1437.
299. Cooper M. FACTORS RELATED TO PRECIPITATION IN FOREST RED MILLIPEDES *CENTROBOLUS COOK*, 1897. Int. j. eng. sci. invention res. dev. 2023; 10(6): 1376-1409.
300. COOPER M. MONTH WITH THE LOWEST NUMBER OF RAINY DAYS IS RELATED TO AT LEAST FOUR FACTORS AND MONTH WITH THE HIGHEST NUMBER OF RAINY DAYS IS RELATED TO FIVE FACTORS IN FOREST RED MILLIPEDES *CENTROBOLUS COOK*, 1897. Int. j. eng. sci. invention res. dev. 2023; 10(6): 1355-1375.
301. COOPER M. SECOND POLAR MOMENTS OF INERTNESS ARE RELATED TO TIME IN RED MILLIPEDES *CENTROBOLUS COOK*, 1897. Int. j. eng. sci. invention res. dev. 2023; 10(6): 1354.
302. Cooper M. I. AIR PRESSURE IS RELATED TO AT LEAST SEVEN FACTORS AND DISTANCE TO THE NEAREST AIRPORT IS RELATED TO AT LEAST THREE FACTORS IN FOREST RED MILLIPEDES *CENTROBOLUS COOK*, 1897. Int. j. eng. sci. invention res. dev. 2023; 10(6): 1330-1354.
303. Cooper M. SURFACE AREA, SURFACE AREA TO VOLUME RATIO, AND CLIMATIC CORRELATES IN *PILL MILLIPEDES SPHAEROTHERIUM BRANDT*, 1833. Int. j. eng. sci. invention res. dev. 2023; 10(6): 1299-1329.
304. Cooper Mark. DOES EJACULATE VOLUME, MASS AND COLEOPOD SPINE LENGTH AND

- NUMBER VARY WITH MOMENTS OF INERTIA AND SEX RATIO IN CENTROBOLUS COOK, 1897? Int. j. eng. sci. invention res. dev. 2023; 10(6): 1282-1298.
305. Cooper M. STERNITE PROMINENCE AND OCEAN WATER TEMPERATURE ARE RELATED TO ABUNDANCE IN CENTROBOLUS COOK, 1897. Int. j. eng. sci. invention res. dev. 2023; 10(6): 1266-1281.
306. Cooper M. FACTORS RELATED TO SUNSHINE IN FOREST RED MILLIPEDES CENTROBOLUS COOK, 1897. Int. j. eng. sci. invention res. dev. 2023; 10(6): 1146-1265.
307. Cooper M. I. MASS IS RELATED TO NINE FACTORS IN FOREST RED MILLIPEDES CENTROBOLUS COOK, 1897. Int. j. eng. sci. invention res. dev. 2023; 10(6): 1126-1142.
308. Cooper M. LOWEST RELATIVE HUMIDITY IS RELATED TO HIGHEST RELATIVE HUMIDITY, HIGHEST OCEAN WATER TEMPERATURE, STERNITE PROMINENCE AND MOMENTS OF INERTIA AND HIGHEST RELATIVE HUMIDITY IS RELATED TO ABUNDANCE, MINIMUM AND MAXIMUM OCEAN WATER TEMPERATURES IN COASTAL FOREST RED MILLIPEDES CENTROBOLUS COOK, 1897. Int. j. eng. sci. invention res. dev. 2023; 10(6): 1104-1125.
309. Cooper M. CORRELATION COEFFICIENT MATRIX FOR SEVEN FACTORS IN THE CLIMATE OF 23 LOCALITIES IN SOUTHERN AFRICA. International Journal of Engineering Science Invention Research & Development. 2023; 10(5): 820-992.
310. Cooper, M. LOWEST NUMBER OF DAILY HOURS OF SUNSHINE IS RELATED TO TEMPERATURE IN FOREST RED MILLIPEDES CENTROBOLUS COOK, 1897. Int. j. eng. sci. invention res. dev. 2024; 10(8): 1557-1582.
311. Cooper, M. LOWEST NUMBER OF DAILY HOURS OF SUNSHINE IS RELATED TO SPECIES VOLUME IN FOREST RED MILLIPEDES CENTROBOLUS COOK, 1897. Int. j. eng. sci. invention res. dev. 2024; 10(8): 1584-1608.
312. Cooper, M. LOWEST NUMBER OF DAILY HOURS OF SUNSHINE IS RELATED TO SURFACE AREA IN FOREST RED MILLIPEDES CENTROBOLUS COOK, 1897. Int. j. eng. sci. invention res. dev. 2024; 10(8): 1610-1635.
313. Cooper, M. LOWEST NUMBER OF DAILY HOURS OF SUNSHINE IS RELATED TO MONTH WITH THE HIGHEST NUMBER OF RAINY DAYS IN FOREST RED MILLIPEDES CENTROBOLUS COOK, 1897. Int. j. eng. sci. invention res. dev. 2024; 10(8): 1636-1659.
314. Cooper, M. LOWEST NUMBER OF DAILY HOURS OF SUNSHINE IS RELATED TO PRECIPITATION IN FOREST RED MILLIPEDES CENTROBOLUS COOK, 1897. Int. j. eng. sci. invention res. dev. 2024; 10(8): 1660-1683.
315. Cooper, M. HOURS OF SUNSHINE THROUGHOUT THE YEAR IS RELATED TO HIGHEST TOTAL HOURS OF SUNSHINE IN A MONTH IN FOREST RED MILLIPEDES CENTROBOLUS COOK, 1897. Int. j. eng. sci. invention res. dev. 2024; 10(8): 1684-1709.
316. Cooper, M. LOWEST NUMBER OF DAILY HOURS OF SUNSHINE IS RELATED TO MINIMUM TEMPERATURE IN FOREST RED MILLIPEDES CENTROBOLUS COOK, 1897. Int. j. eng. sci. invention res. dev. 2024; 10(8): 1710-1733.
317. Cooper, M. LOWEST NUMBER OF DAILY HOURS OF SUNSHINE IS RELATED TO MAXIMUM TEMPERATURE IN FOREST RED MILLIPEDES CENTROBOLUS COOK, 1897. Int. j. eng. sci. invention res. dev. 2024; 10(8): 1734-1757.
318. Cooper, M. LOWEST NUMBER OF DAILY HOURS OF SUNSHINE IS RELATED TO TOTAL HOURS OF SUNSHINE IN A YEAR IN FOREST RED MILLIPEDES CENTROBOLUS COOK, 1897. Int. j. eng. sci. invention res. dev. 2024; 10(8): 1758-1783.
319. Cooper, M. LOWEST NUMBER OF DAILY HOURS OF SUNSHINE IS RELATED TO MONTH WITH THE HIGHEST NUMBER OF RAINY DAYS IN FOREST RED MILLIPEDES CENTROBOLUS COOK, 1897. Int. j. eng. sci. invention res. dev. 2024; 10(8): 1784-1809.
320. Cooper, M. LOWEST NUMBER OF DAILY HOURS OF SUNSHINE IS RELATED TO LATITUDE IN FOREST RED MILLIPEDES CENTROBOLUS COOK, 1897. Int. j. eng. sci. invention res. dev. 2024; 10(8): 1810-1835.
321. Cooper, M. LOWEST NUMBER OF DAILY HOURS OF SUNSHINE IS RELATED TO MOMENTS OF INERTIA IN FOREST RED MILLIPEDES CENTROBOLUS COOK, 1897. Int. j. eng. sci. invention res. dev. 2024; 10(8): 1836-1859.
322. Cooper, M. LOWEST NUMBER OF DAILY HOURS OF SUNSHINE IS RELATED TO MASS IN FOREST RED MILLIPEDES CENTROBOLUS COOK, 1897. Int. j. eng. sci. invention res. dev. 2024; 10(8): 1860-1883.
323. Cooper, M. LOWEST NUMBER OF DAILY HOURS OF SUNSHINE IS RELATED TO LONGITUDE IN FOREST RED MILLIPEDES CENTROBOLUS COOK, 1897. Int. j. eng. sci. invention res. dev. 2024; 10(8): 1884-1907.
324. Cooper, M. AIR PRESSURE IS NOT RELATED TO SPECIES RICHNESS IN PILL MILLIPEDES SPHAEROTHERIIDAE BRANDT, 1833. Int. j. eng. sci. invention res. dev. 2024; 10(8): 1908-1911.

325. Cooper, M. Ian. HOURS OF SUNSHINE THROUGHOUT THE YEAR IS RELATED TO TEMPERATURE IN FOREST RED MILLIPEDES *CENTROBOLUS* COOK, 1897. Int. j. eng. sci. invention res. dev. 2024; 10(9): 1912-1935.
326. Cooper, M. Ian. COPULATION DURATION IS RELATED TO LOWEST RELATIVE HUMIDITY IN FOREST RED MILLIPEDES *CENTROBOLUS* COOK, 1897. Int. j. eng. sci. invention res. dev. 2024; 10(9): 1936-1961.
327. Cooper, M. Ian. LOWEST RELATIVE HUMIDITY IS RELATED TO MOMENTS OF INERTIA IN FOREST RED MILLIPEDES *CENTROBOLUS* COOK, 1897. Int. j. eng. sci. invention res. dev. 2024; 10(9): 1962-1987.
328. Cooper, M. Ian. HOURS OF SUNSHINE THROUGHOUT THE YEAR IS RELATED TO SURFACE AREA IN FOREST RED MILLIPEDES *CENTROBOLUS* COOK, 1897. Int. j. eng. sci. invention res. dev. 2024; 10(9): 1988-2013.
329. Cooper, M. Ian. HOURS OF SUNSHINE THROUGHOUT THE YEAR IS RELATED TO PRECIPITATION IN FOREST RED MILLIPEDES *CENTROBOLUS* COOK, 1897. Int. j. eng. sci. invention res. dev. 2024; 10(9): 2014-2039.
330. Cooper, M. Ian. HOURS OF SUNSHINE THROUGHOUT THE YEAR IS RELATED TO MOMENTS OF INERTIA IN FOREST RED MILLIPEDES *CENTROBOLUS* COOK, 1897. Int. j. eng. sci. invention res. dev. 2024; 10(9): 2040-2065.
331. Cooper, M. Ian. HOURS OF SUNSHINE THROUGHOUT THE YEAR ARE RELATED TO SPECIES VOLUME IN FOREST RED MILLIPEDES *CENTROBOLUS* COOK, 1897. Int. j. eng. sci. invention res. dev. 2024; 10(9): 2066-2089.
332. Cooper, M. Ian. HIGHEST TOTAL HOURS OF SUNSHINE THROUGHOUT A MONTH ARE RELATED TO SPECIES VOLUME IN FOREST RED MILLIPEDES *CENTROBOLUS* COOK, 1897. Int. j. eng. sci. invention res. dev. 2024; 10(9): 2090-2113.
333. Cooper, M. Ian. HIGHEST TOTAL HOURS OF SUNSHINE THROUGHOUT A MONTH ARE RELATED TO MONTH WITH THE HIGHEST NUMBER OF RAINY DAYS IN FOREST RED MILLIPEDES *CENTROBOLUS* COOK, 1897. Int. j. eng. sci. invention res. dev. 2024; 10(9): 2114-2137.
334. Cooper, M. Ian. COPULATION DURATION IS RELATED TO MONTH WITH THE HIGHEST NUMBER OF RAINY DAYS IN FOREST RED MILLIPEDES *CENTROBOLUS* COOK, 1897. Int. j. eng. sci. invention res. dev. 2024; 10(9): 2138-2161.
335. Cooper, M. Ian. HIGHEST TOTAL HOURS OF SUNSHINE THROUGHOUT A MONTH ARE RELATED TO PRECIPITATION IN FOREST RED MILLIPEDES *CENTROBOLUS* COOK, 1897. Int. j. eng. sci. invention res. dev. 2024; 10(9): 2163-2186.
336. Cooper, M. Ian. HIGHEST TOTAL HOURS OF SUNSHINE THROUGHOUT A MONTH ARE RELATED TO TEMPERATURE IN FOREST RED MILLIPEDES *CENTROBOLUS* COOK, 1897. Int. j. eng. sci. invention res. dev. 2024; 10(9): 2187-2210.
337. Cooper, M. Ian. PRECIPITATION IS RELATED TO TEMPERATURE IN FOREST RED MILLIPEDES *CENTROBOLUS* COOK, 1897. Int. j. eng. sci. invention res. dev. 2024; 10(9): 2211-2234.
338. Cooper, M. Ian. TEMPERATURE IS RELATED TO MAXIMUM TEMPERATURE IN FOREST RED MILLIPEDES *CENTROBOLUS* COOK, 1897. Int. j. eng. sci. invention res. dev. 2024; 10(9): 2235-2258.
339. Cooper, Mark Ian. IS MATING FREQUENCY RELATED TO MAXIMUM TEMPERATURE IN FOREST RED MILLIPEDES *CENTROBOLUS* COOK, 1897? Int. j. eng. sci. invention res. dev. 2024; 10(10): 2392-2422.
340. Cooper, M. Ian. MOMENTS OF INERTIA ARE RELATED TO MAXIMUM TEMPERATURE IN FOREST RED MILLIPEDES *CENTROBOLUS* COOK, 1897. Int. j. eng. sci. invention res. dev. 2024; 10(9): 2358-2384.
341. Cooper, M. Ian. IS MATING FREQUENCY RELATED TO TEMPERATURE IN FOREST RED MILLIPEDES *CENTROBOLUS* COOK, 1897? Int. j. eng. sci. invention res. dev. 2024; 10(9): 2333-2357.
342. Cooper, M. Ian. TEMPERATURE IS RELATED TO MINIMUM TEMPERATURE IN FOREST RED MILLIPEDES *CENTROBOLUS* COOK, 1897. Int. j. eng. sci. invention res. dev. 2024; 10(9): 2308-2332.
343. Cooper, M. Ian. IS MATING FREQUENCY RELATED TO HIGHEST TOTAL HOURS OF SUNSHINE THROUGHOUT A MONTH IN FOREST RED MILLIPEDES *CENTROBOLUS* COOK, 1897? Int. j. eng. sci. invention res. dev. 2024; 10(9): 2283-2307.
344. Cooper, M. Ian. IS MATING FREQUENCY RELATED TO PRECIPITATION IN FOREST RED MILLIPEDES *CENTROBOLUS* COOK, 1897? Int. j. eng. sci. invention res. dev. 2024; 10(9): 2259-2282.
345. Cooper, Mark Ian. IS MATING FREQUENCY RELATED TO MINIMUM TEMPERATURE IN FOREST RED MILLIPEDES *CENTROBOLUS* COOK, 1897? Int. j. eng. sci. invention res. dev. 2024; 10(10): 2423-2450.
346. Cooper, Mark Ian. IS MATING FREQUENCY RELATED TO LOWEST RELATIVE HUMIDITY IN FOREST RED MILLIPEDES *CENTROBOLUS* COOK, 1897? Int. j. eng. sci. invention res. dev. 2024; 10(10): 2451-2477.
347. Cooper, M. IS MATING FREQUENCY RELATED TO HOURS OF SUNSHINE THROUGHOUT THE

- YEAR IN FOREST RED MILLIPEDES *CENTROBOLUS* COOK, 1897? Int. j. eng. sci. invention res. dev. 2024; 10(10): 2478-2507.
348. Cooper, Mark Ian. COPULATION DURATION IS MODELLED TO MINIMUM TEMPERATURE IN FOREST RED MILLIPEDES *CENTROBOLUS* COOK, 1897. Int. j. eng. sci. invention res. dev. 2024; 10(10): 2508-2534.
349. Cooper, M. MASS IS CORRELATED TO PRECIPITATION IN FOREST RED MILLIPEDES *CENTROBOLUS* COOK, 1897. Int. j. eng. sci. invention res. dev. 2024; 10(10): 2392-2417.
350. COOPER, MARK IAN. MASS IS INVERSELY CORRELATED TO MINIMUM TEMPERATURE IN FOREST RED MILLIPEDES *CENTROBOLUS* COOK, 1897. Int. j. eng. sci. invention res. dev. 2024; 10(10): 2418-2443.
351. COOPER, MARK IAN. MASS IS CORRELATED TO LOWEST RELATIVE HUMIDITY IN FOREST RED MILLIPEDES *CENTROBOLUS* COOK, 1897. Int. j. eng. sci. invention res. dev. 2024; 10(10): 2444-2469.
352. COOPER, MARK. MASS IS CORRELATED TO MONTH WITH THE HIGHEST NUMBER OF RAINY DAYS IN FOREST RED MILLIPEDES *CENTROBOLUS* COOK, 1897. Int. j. eng. sci. invention res. dev. 2024; 10(10): 2470-2495.
353. COOPER, MARK. VOLUME IS CORRELATED TO MINIMUM TEMPERATURE IN FOREST RED MILLIPEDES *CENTROBOLUS* COOK, 1897. Int. j. eng. sci. invention res. dev. 2024; 10(10): 2496-2522.
354. COOPER, MARK IAN. CURVED SURFACE AREA IS RELATED TO HOURS OF SUNSHINE THROUGHOUT THE YEAR IN FOREST RED MILLIPEDES *CENTROBOLUS* COOK, 1897. Int. j. eng. sci. invention res. dev. 2024; 10(10): 2523-2550.
355. COOPER, M. CURVED SURFACE AREA IS RELATED TO HIGHEST HOURS OF SUNSHINE THROUGHOUT A MONTH IN FOREST RED MILLIPEDES *CENTROBOLUS* COOK, 1897. Int. j. eng. sci. invention res. dev. 2024; 10(10): 2556-2579.
356. COOPER, M. CURVED SURFACE AREA IS RELATED TO LOWEST HOURS OF SUNSHINE IN A DAY IN FOREST RED MILLIPEDES *CENTROBOLUS* COOK, 1897. Int. j. eng. sci. invention res. dev. 2024; 10(11): 2580-2604. https://www.ijesird.com/wp-content/uploads/2024/05/may_1_24.pdf.
357. COOPER, M. CURVED SURFACE AREA IS RELATED TO SURFACE AREA IN FOREST RED MILLIPEDES *CENTROBOLUS* COOK, 1897. Int. j. eng. sci. invention res. dev. 2024; 10(11): 2605-2629. https://www.ijesird.com/wp-content/uploads/2024/05/may_2_24.pdf.
358. COOPER, M. CURVED SURFACE AREA IS RELATED TO SPECIES VOLUME IN FOREST RED MILLIPEDES *CENTROBOLUS* COOK, 1897. Int. j. eng. sci. invention res. dev. 2024; 10(11): 2630-2654. https://www.ijesird.com/wp-content/uploads/2024/05/may_3_24.pdf.
359. COOPER, M. CURVED SURFACE AREA IS RELATED TO TEMPERATURE IN FOREST RED MILLIPEDES *CENTROBOLUS* COOK, 1897. Int. j. eng. sci. invention res. dev. 2024; 10(11): 2655-2680. https://www.ijesird.com/wp-content/uploads/2024/05/may_4_24.pdf.
360. COOPER, M. CURVED SURFACE AREA IS RELATED TO MASS IN FOREST RED MILLIPEDES *CENTROBOLUS* COOK, 1897. Int. j. eng. sci. invention res. dev. 2024; 10(11): 2681-2705. https://www.ijesird.com/wp-content/uploads/2024/05/may_5_24.pdf.
361. COOPER, M. CURVED SURFACE AREA IS RELATED TO MOMENTS OF INERTIA IN FOREST RED MILLIPEDES *CENTROBOLUS* COOK, 1897. Int. j. eng. sci. invention res. dev. 2024; 10(11): 2706-2730. https://www.ijesird.com/wp-content/uploads/2024/05/may_6_24.pdf.
362. COOPER, M. COPULATION DURATION IS RELATED TO CURVED SURFACE AREA IN FOREST RED MILLIPEDES *CENTROBOLUS* COOK, 1897. Int. j. eng. sci. invention res. dev. 2024; 10(11): 2731-2754. https://www.ijesird.com/wp-content/uploads/2024/05/may_7_24.pdf.
363. Cooper, M. CURVED SURFACE AREA IS RELATED TO MEAN OCEAN WATER TEMPERATURES IN COASTAL FOREST RED MILLIPEDES *CENTROBOLUS* COOK, 1897. Int. j. eng. sci. invention res. dev. 2024; 10(11): 2964-2988. <https://www.ijesird.com/wp-content/uploads/2024/05/49.pdf>.
364. Cooper, M. CURVED SURFACE AREA IS RELATED TO MINIMUM OCEAN WATER TEMPERATURES IN COASTAL FOREST RED MILLIPEDES *CENTROBOLUS* COOK, 1897. Int. j. eng. sci. invention res. dev. 2024; 10(11): 2939-2963. <https://www.ijesird.com/wp-content/uploads/2024/05/48.pdf>.
365. Cooper, M. CURVED SURFACE AREA IS RELATED TO HIGHEST OCEAN WATER TEMPERATURES IN COASTAL FOREST RED MILLIPEDES *CENTROBOLUS* COOK, 1897. Int. j. eng. sci. invention res. dev. 2024; 10(11): 2914-2938. <https://www.ijesird.com/wp-content/uploads/2024/05/47.pdf>.
366. Cooper, M. CURVED SURFACE AREA IS RELATED TO AVERAGE TEMPERATURE VARIATION IN FOREST RED MILLIPEDES *CENTROBOLUS* COOK, 1897. Int. j. eng. sci. invention res. dev. 2024; 10(11): 2883-2908. <https://www.ijesird.com/wp-content/uploads/2024/05/46.pdf>.

367. Cooper, M. CURVED SURFACE AREA IS RELATED TO MINIMUM TEMPERATURE IN FOREST RED MILLIPEDES *CENTROBOLUS* COOK, 1897. Int. j. eng. sci. invention res. dev. 2024; 10(11): 2857-2882. <https://www.ijesird.com/wp-content/uploads/2024/05/45.pdf>.

368. Cooper, M. CURVED SURFACE AREA IS RELATED TO LONGITUDE IN FOREST RED MILLIPEDES *CENTROBOLUS* COOK, 1897. Int. j. eng. sci. invention res. dev. 2024; 10(11): 2831-2856. <https://www.ijesird.com/wp-content/uploads/2024/05/44.pdf>.

369. COOPER, M. CURVED SURFACE AREA IS RELATED TO WIDTH IN FOREST RED MILLIPEDES *CENTROBOLUS* COOK, 1897. Int. j. eng. sci. invention res. dev. 2024; 10(11): 2806-2830. <https://www.ijesird.com/wp-content/uploads/2024/05/43.pdf>.

370. COOPER, M. CURVED SURFACE AREA IS RELATED TO LENGTH IN FOREST RED MILLIPEDES *CENTROBOLUS* COOK, 1897. Int. j. eng. sci. invention res. dev. 2024; 10(11): 2780-2805. <https://www.ijesird.com/wp-content/uploads/2024/05/42.pdf>.

371. COOPER, M. CURVED SURFACE AREA IS RELATED TO SEX RATIO IN FOREST RED MILLIPEDES *CENTROBOLUS* COOK, 1897. Int. j. eng. sci. invention res. dev. 2024; 10(11): 2755-2779. <https://www.ijesird.com/wp-content/uploads/2024/05/41.pdf>.

372. COOPER, M. I. LENGTH IS RELATED TO HIGHEST TOTAL HOURS OF SUNSHINE IN A MONTH IN FOREST RED MILLIPEDES *CENTROBOLUS* COOK, 1897. Int. j. eng. sci. invention res. dev. 2024; 10(11): 3102-3129. <https://www.ijesird.com/wp-content/uploads/2024/05/54.pdf>.

373. COOPER, M. I. FEMALE WIDTH IS RELATED TO HOURS OF SUNSHINE THROUGHOUT THE YEAR IN FOREST RED MILLIPEDES *CENTROBOLUS* COOK, 1897. Int. j. eng. sci. invention res. dev. 2024; 10(11): 3073-3101. <https://www.ijesird.com/wp-content/uploads/2024/05/53.pdf>.

374. COOPER, M. LOWEST NUMBER OF DAILY HOURS OF SUNSHINE IN A DAY IS RELATED TO LENGTH IN FOREST RED MILLIPEDES *CENTROBOLUS* COOK, 1897. Int. j. eng. sci. invention res. dev. 2024; 10(11): 3044-3072. <https://www.ijesird.com/wp-content/uploads/2024/05/52.pdf>.

375. COOPER, M. LENGTH IS RELATED TO HOURS OF SUNSHINE THROUGHOUT THE YEAR IN FOREST RED MILLIPEDES *CENTROBOLUS* COOK, 1897. Int. j. eng. sci. invention res. dev. 2024;

10(11): 3015-3043. <https://www.ijesird.com/wp-content/uploads/2024/05/51.pdf>.

376. COOPER, M. WIDTH IS RELATED HIGHEST TOTAL HOURS OF SUNSHINE IN A MONTH IN FOREST RED MILLIPEDES *CENTROBOLUS* COOK, 1897. Int. j. eng. sci. invention res. dev. 2024; 10(11): 2989-3014. <https://www.ijesird.com/wp-content/uploads/2024/05/50.pdf>.

APPENDIX 1. Surface area (mm²) followed by length (mm) for female *Centrobolus* Cook, 1897.

2111.15
3026.009
928.906
1061.607
2109.328
2512.269
2946.814
2934.185
1574.818
1812.762
3768.403
628.256
1636.707
1917.942
2621.596
2709.624
2419.026
1471.773
899.689
1350.885
1378.782
3668.375
50
76
31
34
51
52
60
63
43
43
63
27
40

50	59
62	58
50	49
48	49
44	46
29	28
38	39
37	45
63	65

APPENDIX 2. Surface area (mm²) followed by length (mm) for male *Centrobolus* Cook, 1897.

1080.708
2462.874
1343.031
1130,973
1790,708
1934,216
1585.813
2717.289
1258.208
1408.627
2306.18
827.872
1080.708
2098.579
1972.92
1845.749
2150.357
1393.359
826.93
1199.837
1399.58
2676.637
39
69
43
41
52
54
49
67
40
43
53
33
39